

the art of everyday:

collection catalogue



Image Credit: SheOak Lane, 2021

This Aboriginal Fashion Showcase
highlights the dynamic emerging
and established Western Australian
traditional and contemporary
textile art and designs.

22.4167 S, 118.4030 E



Image Credit: Kevin Exeter, 2021

welcome to country

We acknowledge the Banjima people as the Traditional Custodians of the lands on which we gather. We recognise their strength and resilience and pay our respects to their Elders past and present.

We further acknowledge and pay our respects to the Elders of all the Indigenous people that have contributed to this runway experience.



Image Credit: Kevin Exeter, 2021

the art of everyday

The burgeoning WA Indigenous textiles industry has established itself nationally; contemporary articulations of our Country shimmer across the surface of contemporary textiles on National and International catwalks. Reflecting on what was one of the most challenging years of our generations existence, Indigenous

narratives and sustainable projects offer us new pathways for our shared future. Many designers, artists and makers involved in the showcase prioritise sustainable practice, seeing Country on textiles as an extension of the ancient care for country, sharing Indigenous culture in accessible ways with wider audiences.

These stories are an extension of Australia's only internationally renowned contemporary arts movement. With 60,000 years of history, the WA fashion showcase echoes the past as much as it looks to the future. Presenting a myriad of possibilities, this visual celebration offers a glimpse into the infinite, timeless knowledge of WA Aboriginal arts and design whilst together, creating a contemporary language for a new era. Many artists and art centres in the showcase also see textiles and fashion as integral to future economic independence, developing new income streams through design, marketing and younger generations.

Starting in the **Pilbara**, we see new commissions from independent artists Bobbi and Skye Lockyer (Port Hedland), Yinjaa-Barni, Juluwarlu, (Roebourne), and Kaye White (working with Kirrikin). The Jina Jina collection by Yinjaa-Barni arts is a groundbreaking example of the ways stories and art can be curated onto new surfaces, with expert selection of flow and texture. We have worked with Pilbara creatives, artist and designers as much as possible including models, makeup artists and photographers. The WA showcase features five new commissioned looks by artists and art centres from Roebourne, Port Hedland and the Karijini area. It was important to acknowledge the country on which the event takes place and the breadth of contemporary arts production across the innovative and bustling Pilbara creative industries.

The **Kimberley** collection features bush dyed silks, hand painted accessories, block printed fabric and iconic collaborations. Rukaji (Mangkaja, Jimbalakudunji) is a small family business run by women who collect natural dyes from the landscape around them to create patterns on silks and other natural fabrics. Cathy Ward from Waringarri Arts worked with Grace Lillian Lee to block print and design fabric for her Gerdewoon Print. Senior Gooniyandi artist Mervyn Street paints station stories on cowboy gear, we have a cowboy hat and a belt as part of this collection. Senior Walmajarri artist, Ngarraja Tommy May was a leading instigator of the Mangkaja x Gorman collaboration which

was hailed as one of the most significant collaborations of the WA movement. We have two runway looks on loan for the show. Ngali, founded by Waradjuri woman Denni worked with Kija artist Lindsay Malay from Warmun Arts to create an incredible collection that put the importance of country first and foremost.

From the **Mid West**, there are a series of stunning handmade kangaroo skin bags, created by senior Yamaji artists. These beautiful objects will be scattered across the showcase as powerful reminders to sustainable practices and the innovation of Yamaji cross disciplinary artists.

Closer to **Perth** we have selected work by senior Nyoonar artist, Peter Farmer which have designed garments paired with hand painted elements. Peter has used his signature motifs that are indicative of South West landscape and stories. Peter is a pioneer in this space and has worked with the likes of

Jimmy Choo and others Internationally for many decades. Deadly Denim founded by Whadjuk/ Ballardong woman Rebecca Barlow upcycles denim wares to speak to audiences of all ages, bridging barriers and changing the world one jacket at a time. She has showcased these wares in LA and NYC and is fast growing to be an important WA creative

with social justice as a foundation.

Recollecting on the magnificent state that we all call home, the shared narratives of place are celebrated in these contemporary textiles. Returning to a local story has shifted the way we engage with the territory around us.

The **Art of Everyday** invites us to celebrate the textures, the colours and the dramatic diversity that the State of Western Australia. Privileging a Pilbara aesthetic, the project builds capacity and acknowledges the tremendous talent of the region including looks from Yinjaa-Barni Barni, Kirrikin, Martumili, Port Hedland creatives and Juluwarlu. With many looks transcending the typical fast fashion framework, these timeless looks use fashion as a medium of an infinite lineage.

The WA showcase acknowledges the Banjima people of Karijini National Park, and pay our respects to elders and ancestors past, present and emerging.



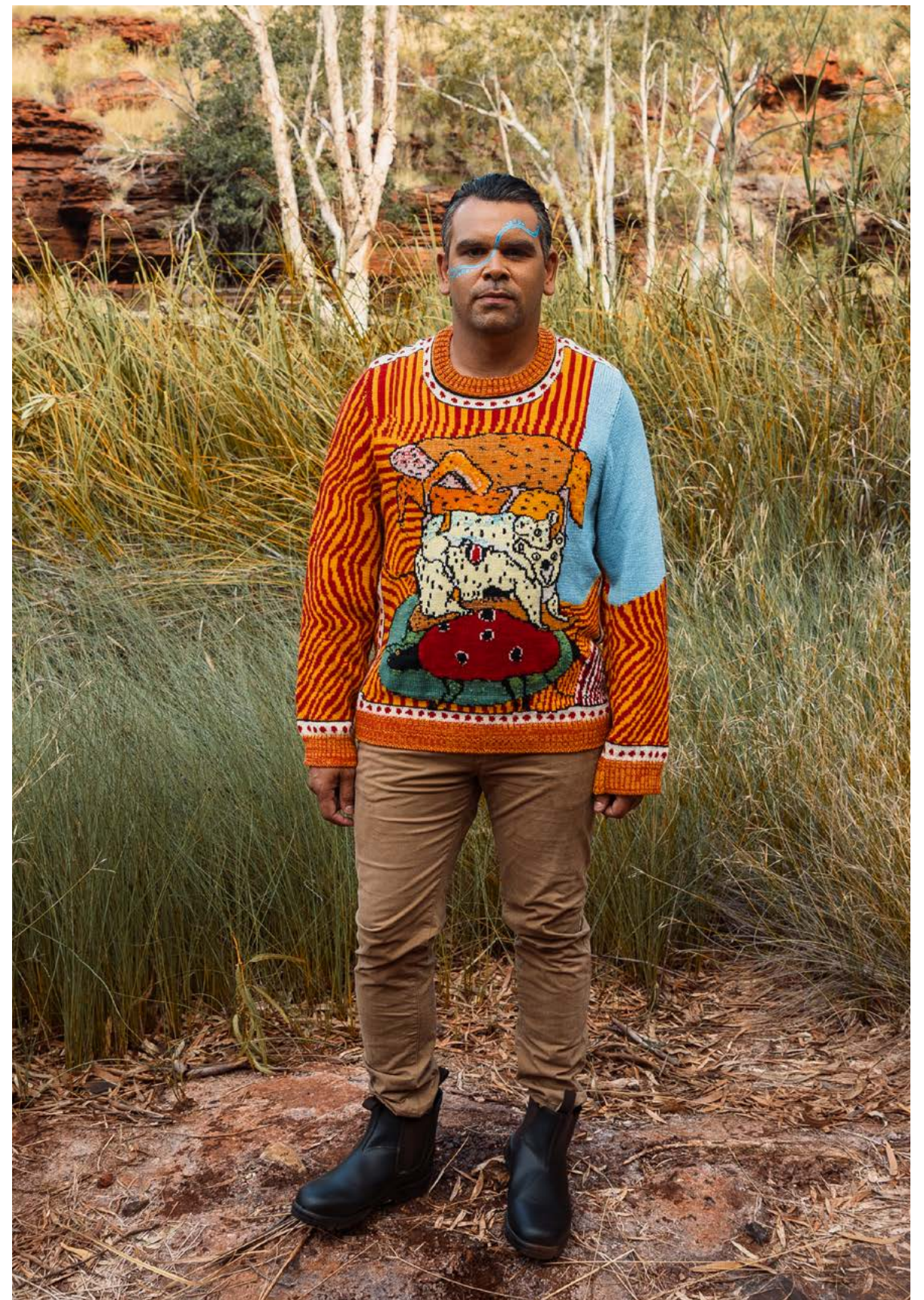
Jasmine Spratt wears **cropped top and pants, with dress**, both from Jina Jina collection, Yinjaa-Barni Designs - website: yinjaa-barni.com.au, instagram: [@yinjaa.barni.art](https://www.instagram.com/yinjaa.barni.art) | **earrings** from Sharlene Phillips of Spinifex Hill Studios - website: spinifexhillstudio.com.au, instagram: [@spinifexhillartists](https://www.instagram.com/spinifexhillartists)



Natika Orchard (Bardi, Nyul Nyul & Nyikina) wears **dress** from Jina Jina collection, Yinjaa-Barni Designs - website: yinjaa-barni.com.au, instagram: [@yinjaa.barni.art](https://www.instagram.com/yinjaa.barni.art) | **earrings** from Litiyalla - website: litiyalla.com, instagram [@litiyalla](https://www.instagram.com/litiyalla) | **hand painted hat** by Mervyn Street



Samara Seuloff (Banjima) wears **custom design** from Bobbi Lockyer - website: bobbilockyer.com, instagram: [@bobbilockyer](https://www.instagram.com/bobbilockyer)



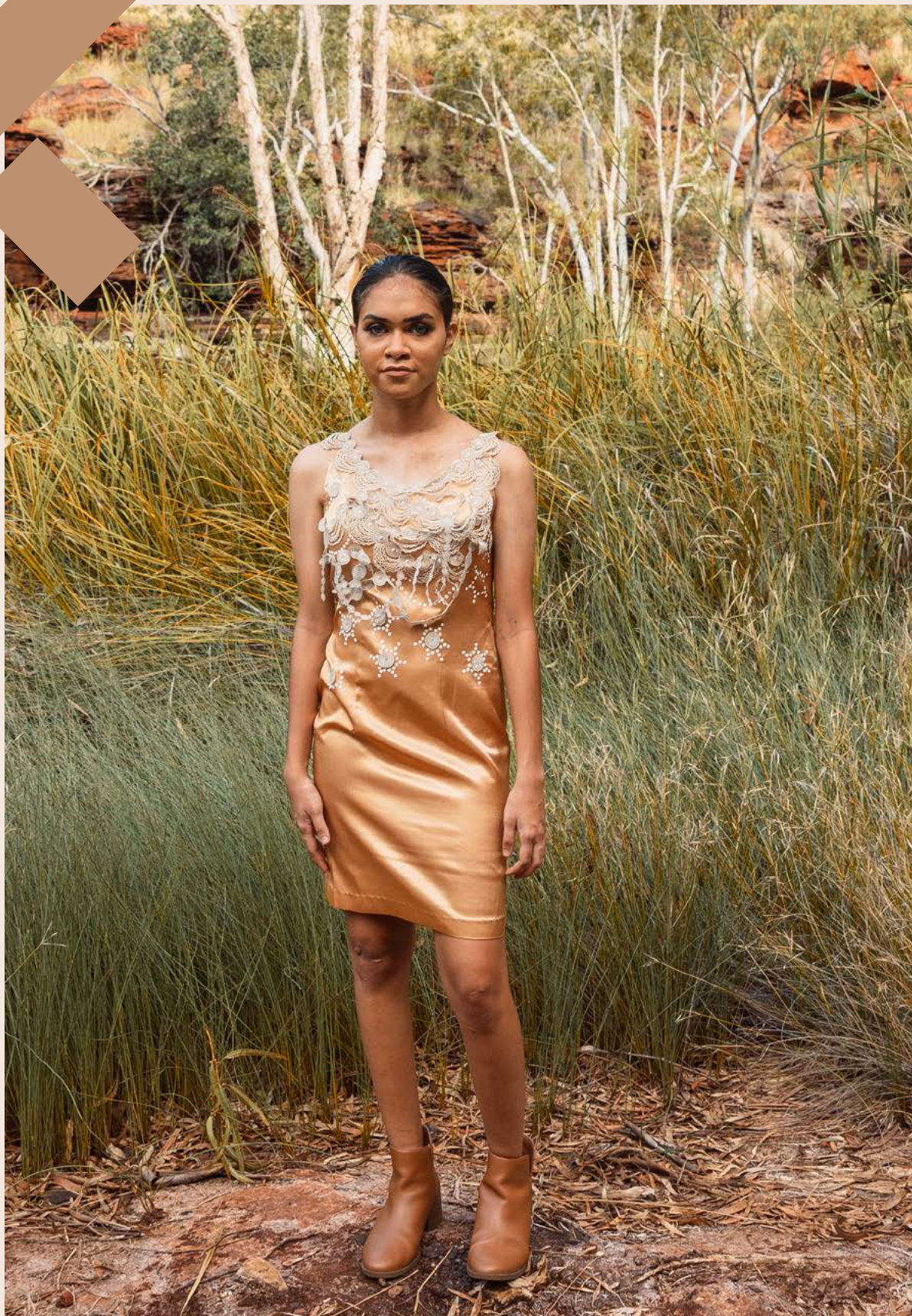
Jesse Simpson (Kariyarra) wears a **hand loomed custom jumper** from John Price Siddon x Emma Buswell - website: mangkaja.com, instagram: [@mangkajaarts](https://www.instagram.com/mangkajaarts)



Lisa Rodd (Banjima & Noongar) wears **dress** from Kirrikin - website: kirrikin.com, instagram: [@kirrikinaustralia](https://www.instagram.com/kirrikinaustralia)



Synarah Murphy (Yamatiji & Kija) wears **custom painted dress, earrings and necklace**, artwork by Skye Lockyer - website: [etsy.com/au/shop/skyelockyer](https://www.etsy.com/au/shop/skyelockyer), instagram: [@skyelockyer](https://www.instagram.com/skyelockyer)



Destinee Green (Ngarluma & Kija) wears **custom dress** from Bobbi Lockyer - website: bobbilockyer.com, instagram: [@bobbilockyer](https://www.instagram.com/bobbilockyer)



Chelsea Derschow (Banjima) wears **pants, dress and headband** from Jina Jina collection, Yinjaa-Barni Designs - website: yinjaa-barni.com.au, instagram: [@yinjaa.barni.art](https://www.instagram.com/yinjaa.barni.art) | **earrings** from Sharlene Phillips of Spinifex Hill Studios - website: spinifexhillstudio.com.au, instagram: [@spinifexhillartists](https://www.instagram.com/spinifexhillartists) | **necklace** from Juluwarlu Art Centre - website: juluwarlu.com.au, instagram: [@juluwarlu](https://www.instagram.com/juluwarlu)



Natika Orchard (Bardi, Nyul Nyul & Nyikina) wears **dresses** from Cathy Ward x Grace Lillian Lee of Warringarri Aboriginal Arts - website: warringarriarts.com.au, instagram: [@warringarri_arts](https://www.instagram.com/warringarri_arts) | **earrings** from Litiyalla - website: litiyalla.com, instagram: [@litiyalla](https://www.instagram.com/litiyalla)



Jasmine Spratt wears **shirt and shorts** from Jina Jina collection, Yinjaa-Barni Designs - website: yinjaa-barni.com.au, instagram: [@yinjaa.barni.art](https://www.instagram.com/yinjaa.barni.art)



Samara Seuloff (Banjima) wears **bomber jacket, T-shirt, wrap skirt** and **earrings** from Juluwarlu Art Centre - website: juluwarlu.com.au, instagram: [@juluwarlu](https://www.instagram.com/juluwarlu)



Jesse Simpson (Kariyarra) wears **bomber jacket, T-shirt** and **shorts** from Juluwarlu Art Centre - website: juluwarlu.com.au, instagram: [@juluwarlu](https://www.instagram.com/juluwarlu)



Lisa Rodd (Banjima & Noongar) wears **pants** and **halter top** from Kirrikin, artwork by Kaye White (Banjima) - website: kirrikin.com, instagram: [@kirrikinaustralia](https://www.instagram.com/kirrikinaustralia) | earrings from Sharlene Phillips of Spinifex Hill Studios - website: spinifexhillstudio.com.au, instagram: [@spinifexhillartists](https://www.instagram.com/spinifexhillartists)



Synarah Murphy (Yamatiji & Kija) wears **denim shirt** and **skirt** produced by Rebecca Barlow of Deadly Denim - website: deadlydenim.com.au, instagram: [@deadly_denim](https://www.instagram.com/deadly_denim)



Destinee Green (Ngarluma & Kija) wears **shirt** from Peter Farmer - facebook: [FarmerPJDesigns](#) instagram: [@peterfarmer2](#) | pants from Jina Jina collection, Yinjaa-Barni Designs - website: [yinja-barni.com.au](#), instagram: [@yinja.barni.art](#)



Chelsea Derschow (Banjima) wears **dress and jacket** from Peter Farmer facebook: [FarmerPJDesigns](#) instagram: [@peterfarmer2](#) | necklace from Juluwarlu Art Centre - website: [juluwarlu.com.au](#), instagram: [@juluwarlu](#)



Natika Orchard (Bardi, Nyul Nyul & Nyikina) wears **jumpsuit** from Jina Jina collection, Yinjaa-Barni Designs - website: yinjaa-barni.com.au, instagram: [@yinjaa.barni.art](https://www.instagram.com/yinjaa.barni.art) | **earrings** from Sharlene Phillips of Spinifex Hill Studios - website: spinifexhillstudio.com.au, instagram: [@spinifexhillartists](https://www.instagram.com/spinifexhillartists)



Samara Seuloft (Banjima) wears **dress, bomber jacket** and **necklace** from Juluwarlu Art Centre - website: juluwarlu.com.au, instagram: [@juluwarlu](https://www.instagram.com/juluwarlu)



Lisa Rodd (Banjima & Noongar) wears dress from Kirrikin, artwork by Kaye White (Banjima) - website: kirrikin.com,
instagram: [@kirrikinaustralia](https://www.instagram.com/kirrikinaustralia) | **earrings** from Sharlene Phillips of Spinifex Hill Studios - website:
spinifexhillstudio.com.au, instagram: [@spinifexhillartists](https://www.instagram.com/spinifexhillartists)



Samara Seuloff (Banjima) wears scarves as dress from Rukaji Designs, Kimberley - instagram: [@rakajidesigns](https://www.instagram.com/rakajidesigns) |
kangaroo skin bag from Yamaji Art Centre - website: yamajiart.com, instagram: [@yamajiart](https://www.instagram.com/yamajiart)



Synarah Murphy (Yamatiji & Kija) wears **jumpsuit** from Jina Jina collection, Yinjaa-Barni Designs - website: yinjaa-barni.com.au, instagram: [@yinjaa.barni.art](https://www.instagram.com/yinjaa.barni.art)



Destinee Green (Ngarluma & Kija) wears **dress** and **scarf** from Ngali x Lindsay Malay of Warmun Arts Centre - website: ngali.com.au, instagram: [@ngali_australia](https://www.instagram.com/ngali_australia), website: warmunart.com.au, instagram: [@warmunart](https://www.instagram.com/warmunart)



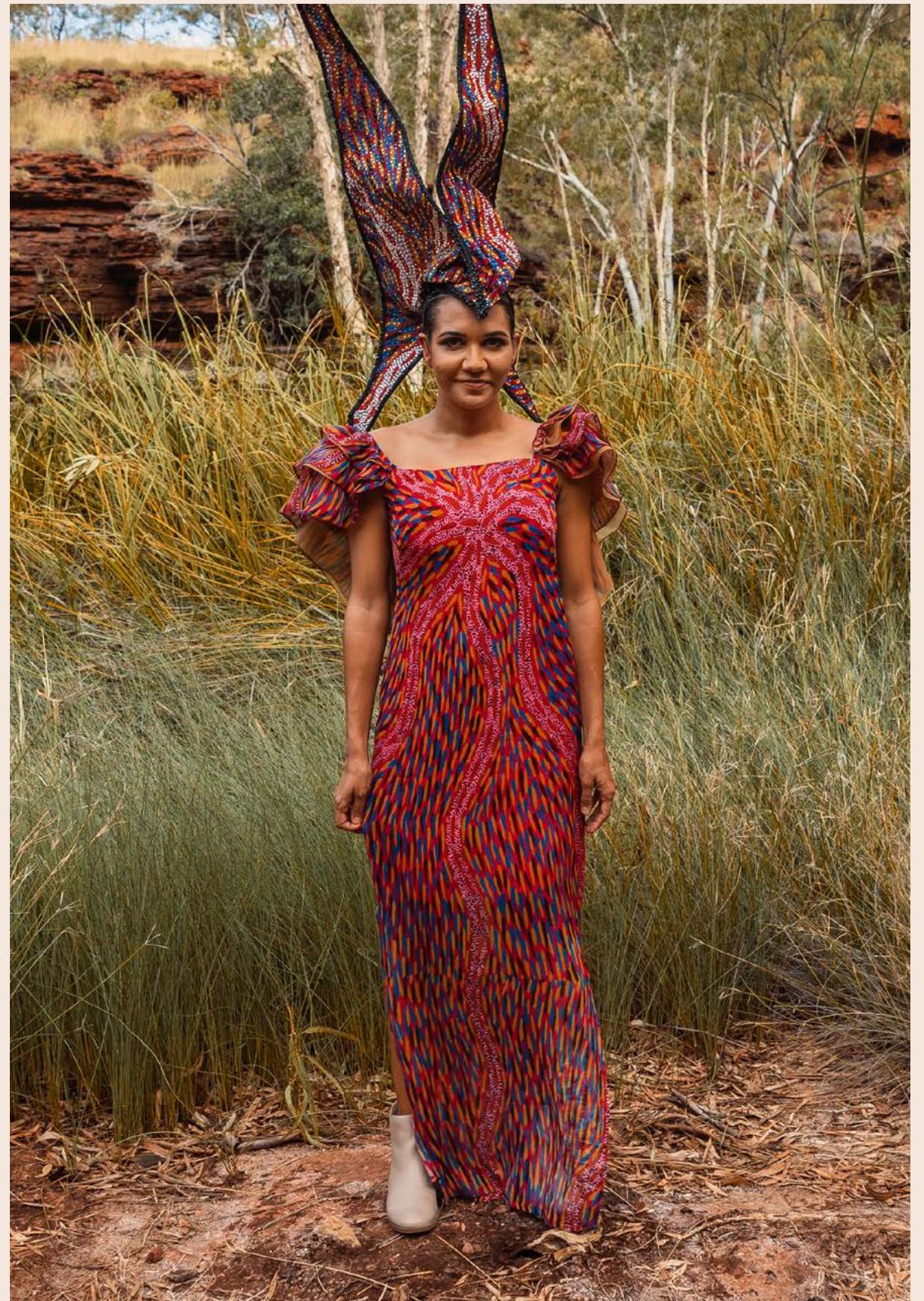
Natika Orchard (Bardi, Nyul Nyul & Nyikina) wears **dress** from Tommy May of Mangkaja Arts x Gorman - website: mangkaja.com, instagram: [@mangkajaarts](https://www.instagram.com/mangkajaarts), website: gormanshop.com.au, instagram: [@gormanclothing](https://www.instagram.com/gormanclothing)



Samara Seuloff (Banjima) wears **dress** and **scarf** from Ngali x Lindsay Malay of Warmun Art Centre - website: ngali.com.au, instagram: [@ngali_australia](https://www.instagram.com/ngali_australia), website: warmunart.com.au, instagram: [@warmunart](https://www.instagram.com/warmunart) | **kangaroo skin bag** from Yamaji Art Centre - website: yamajiart.com, instagram: [@yamajiart](https://www.instagram.com/yamajiart)



Chelsea Derschow (Banjima) wears **dress** from Tommy May of Mangkaja Arts x Gorman - website: mangkaja.com, instagram: [@mangkajaarts](https://www.instagram.com/mangkajaarts), website: gormanshop.com.au, instagram: [@gormanclothing](https://www.instagram.com/gormanclothing) | **earrings** from Sharlene Phillips of Spinifex Hill Studios - website: spinifexhillstudio.com.au, instagram: [@spinifexhillartists](https://www.instagram.com/spinifexhillartists)



Lisa Rodd (Banjima & Noongar) wears **custom dress** and **headpiece** from Kirrikin, artwork by Kaye White (Banjima) - website: kirrikin.com, instagram: [@kirrikinaustralia](https://www.instagram.com/kirrikinaustralia)



Destinee Green (Ngarluma & Kija) wears **skirt** and **top** from Jina Jina collection, Yinjaa-Barni Designs- website: yinjaa-barni.com.au, instagram: [@yinjaa.barni.art](https://www.instagram.com/yinjaa.barni.art)



Chelsea Derschow (Banjima) wears **pants** and **long jacket** from Jina Jina collection, Yinjaa-Barni Designs - website: yinjaa-barni.com.au, instagram: [@yinjaa.barni.art](https://www.instagram.com/yinjaa.barni.art) | **earrings** from Litiyalla - website: litiyalla.com, instagram [@litiyalla](https://www.instagram.com/litiyalla)

creatives from across the state

The Art of Everyday Producers: **The Junction Co.**

The Art of Everyday Curator: **Emilia Galatis**

Bobbi Lockyer

Pilbara

@bobbilockyer

Skye Lockyer

Pilbara

@saltwatergorl

Waringarri Aboriginal Arts

Kimberley

@waringarri_arts

Cathy Ward x Grace Lillian Lee

Jina Jina by Yinjaa-Barni

Pilbara

@yinjaa.barni.art

Patrycia Floyd

Juluwarlu

Pilbara

@juluwarlu

Spinifex Hill Studios

Pilbara

@spinifexhillartists

Sharlene Phillips

Martumili Artists

Pilbara

@martumiliartists

Yamaji Arts

Mid West

@yamajiart

Deadly Denim

South West

@deadly_denim_

Peter Farmer

South West

@peterfarmerart2

Ngali x Lindsay Malay

Kimberley

@warmunart @ngali_australia

Mangkaja Arts

Kimberley, Rukaji Designs

@mangkajaarts

Tommy May x Gorman

Mervyn Street

John Price Siddon x Emma Buswell

Kirrikin

Pilbara artist

@kirrikinaustralia

Kaye White

Sheryl Hicks

Litiyalla

@litiyalla

designer Camilla Sawford