



THE JUNCTION CO

# 2021/22 ANNUAL REPORT

**ENGAGE  
GROW  
EMPOWER**

The Junction Co.'s main office is located in Port Hedland, in the northwest Pilbara region of Western Australia, on beautiful Kariyarra Country. We acknowledge the Kariyarra, Ngarla and Nyamal people as the Traditional Custodians of these lands and waterways and the Traditional Owners of Country throughout Australia. We recognise their strength and resilience and pay our respects to their Elders past, present and emerging.

## OUR VISION

To engage, grow and empower regional creative industries.

### PURPOSE

To make a creative difference.

### MISSION

To advocate and connect creatives with workspace, learning opportunities and networks, to uplift their endeavours and create an environment in which both local community and creatives can support each other.

### VALUES

#### GROWTH + EMPOWERMENT

Capacity build through connection with creativity, encouragement and passion.

#### EVOLUTIONARY (NOVEL, UNIQUE + EXCITING)

Embrace intrigue, and deliver unexpected and captivating experiences.

#### ACCOUNTABILITY

Responsive to needs, and apply an agile and adaptive approach.

#### BELONGING + CONNECTION

Model transparency, diversity, and inclusivity, celebrate and respect differences.

#### AUTHENTIC + GENUINE

Do what we say, say what we do, are respectful, honest, value all contributions, and act with integrity.

#### PERFORMANCE

Hold each other to account, are enablers for high performance in the team and other creatives.

## STRATEGIC PRIORITIES

1

### ENGAGE

Strengthening communities through creativity.

2

### GROW

Develop thriving creative practices.

3

### EMPOWER

Advocate and celebrate creative industries.

4

### OUR BUSINESS

Nature a high performing culture.



## MIRANDA CECICH

Chair, The Junction Co.

# CHAIR REPORT

As we embed ourselves deeper into this region, our vision to engage, grow and empower regional creative industries is being realised. From a dynamic and diverse annual program, we have selected 12 highlights to share; 12 stories for 12 months as told by our team, which best illustrate The Junction Co. at this place in time.

Our programs and exhibitions have grown ever more robust, with a sophisticated creative professional development offering that has strong emphasis on online delivery to be accessible to audiences anywhere regardless of geography. Participants from across the state have this year taken part in programs like COMPASS, EDIFY and EVOLVE, building their technical skill and their capacity for creative enterprises to be an occupation rather than purely a passion. The opportunity to showcase work in our exhibiting platforms, like launchpad exhibition Radius, has changed the game for so many regional creatives.

We believe The Jury Art Prize is Western Australia's most innovative arts award and for the second consecutive year, our live-streaming of the opening night was a standout, bringing fresh, exciting work to an audience spread around the world.

Within the Courthouse Gallery+Studio we have expanded our stockroom and revamped our retail space. The Gallery is a platform for Australian artists and makers, and our audience

reflects that – we sell right across Australia through our physical and online stores.

The growth of our online offering is a clever response and a happy side-effect to that insidious challenge, COVID. As state borders opened in early 2022, our team planned for the possible impacts of illness, isolation and most importantly, supported each other through the anxiety of the unknown.

Our planning meant we were well prepared and able to deliver high quality programming despite restrictions; the only major impact was that acclaimed Australian artist Alana Hunt was unable to travel from the Kimberley for the opening of her exhibition **All The Violence Within This**. It was an honour to work with Alana and share her important work, and while it was disappointing to not have her physically with us, true to form we moved quickly and arranged online 'Meet the Artist' sessions to ensure we made the absolute most of our time with her.

We have continued to enhance our financial sustainability, establishing a connector model of service delivery and cementing our social enterprise approach through product initiatives such as Portside soap. Importantly, during the financial year we renewed key partnerships with Town of Port Hedland, BHP and Regional Arts WA, providing security for our organisation and our team into the future.

The Junction Co. continues to take a leading role with Regional Arts WA in the Regional Arts Network which brings together arts and cultural bodies from each region in the state to facilitate growth, stability and structural integrity within the organisations themselves. We're proud contributors to and beneficiaries of this network, and we know that our involvement helps to cement our future and that by sharing our knowledge within the network we help to cement the future of others.

The strongest asset of The Junction Co. continues to be the people who built it and shape it.

Our team combines people who have lived in the Pilbara for many years with those who are new to the region; half of our employees speak English as their second language, and they come from a wide range of backgrounds... from WAAPA Graduates to fine art degrees, to professions as wide-ranging as community development, photography, marketing, communications and design. This diversity brings a richness in experiences and ideas and colours the offering of The Junction Co. in the most wonderful way.

As a true Pilbara organisation, our team understands transience is something to be embraced rather than fought against. We have retained enormous talent by offering remote and flexible working opportunities to team members whose lives have taken them away from the region, and we continue to take an innovative approach to attracting new team members – offering high-quality professional development opportunities and the ability to facilitate and lead projects makes The Junction Co. a stand-out employer.

We secured our employer-of-choice status this year, most notably adopting a parental

leave policy which includes superannuation payments to team members during their leave period; supporting flexible work arrangements particularly through COVID; and introducing an employee assistance program providing team members access to a psychologist and support services.

At the Board level, while we have farewelled some integral founding members over the course of the year (thank you Shelley Blatch and Dani Airton), we have welcomed new voices (hello Dr Gemma Booth and Patrycja Rosinska). We have a strong and stable leadership team made up of dynamic, highly skilled women who volunteer their time generously, and we are very proud of what we have created.

Executive Officer Katie Evans took parental leave in the latter part of the financial year and Patrycja Rosinska stepped into the role in April. Katie has been the lynchpin of The Junction Co. since its inception, an activator and leader in establishing The Junction Co. and pursuing creative endeavours across the region. Patrycja has worked incredibly hard and delivered amazing results, with great depths of enthusiasm and dedication. We are grateful to both Katie and Patrycja for their innovation, creativity and untiring commitment to the vision of The Junction Co.

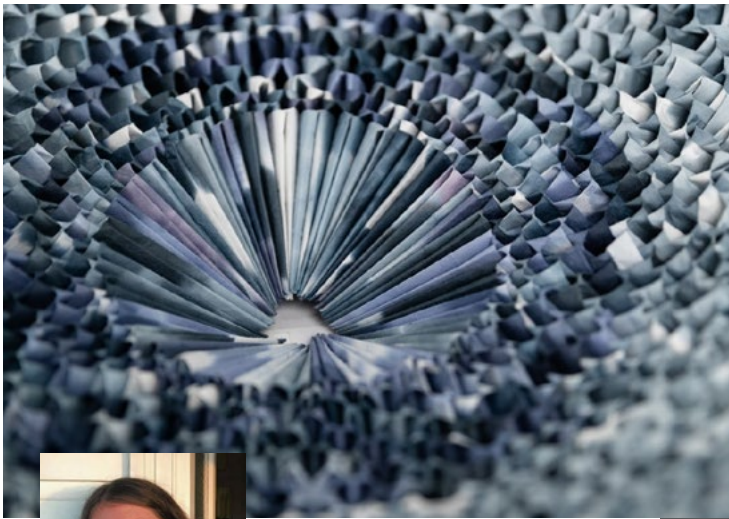
Finally, to you – our community, our audience, our advocates – thank you. We are ever grateful for your support.



**MIRANDA CECICH**  
Chair, The Junction Co.

# HIGHLIGHTS

JULY 2021



**ROSE BARTON**  
Regional Coordinator



As the Junction’s representative to the state-wide Regional Arts Network, identified a need to provide participants in the Network’s Ebb+Flow residency program, and other regional practitioners, the skills and knowledge to facilitate workshops within their communities. Working with Broome artist and lecturer Jacky Cheng, I led the production of a series of four facilitator instructional videos. Empowering creatives to share their practice with others is immensely valuable. By teaching others and sharing in making, artist’s is able to discover new things about themselves and their practice. Communities flourish when people connect over art.

Image provided by The Junction Co.; artwork by Jacky Cheng, residency with *TEND* exhibition, 2021.

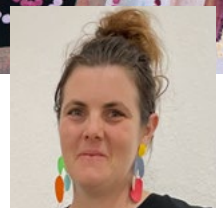
The Facilitator Development video series was produced through the Regional Arts Network,; a Regional Arts WA initiative, supported by Minderoo Foundation, The Ian Potter Foundation, and the Australian Government’s Regional Arts Fund. The Junction built upon this video series and launched EDIFY in June 2022, a three-week holistic online training program that provides creatives with the tools to become confident, structured, and engaging facilitators.

AUGUST 2021



The raw energy was overflowing at the Martumili Mob opening night. In the Gallery+Studio the Martu men and women, alongside younger artists who were helping their peers find a comfortable seat; babies crawling over swags placed on the floor, replicating the painting sheds out on country; story-sharing of culture and Country to family, Martu, other First Nations, and visitors, all vying to pick their favourite artwork and get a snap next to the artist. The phones rang hot as artwork was sold to buyers across the country, and celebrations as one exhibiting artist won at the coveted 2021 NATSII Awards, announced the same night.

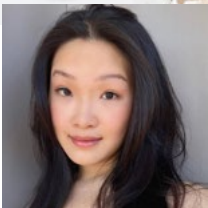
Image provided by Martumili Artists; artwork by Corban Clause Williams, Kaapla (Kalypa, Canning Stock Route 23), 2021.



**KATIE EVANS**  
Executive Officer

Featuring artists who work in the communities of Parnpajinya (Newman), Jigalong, Parngurr, Kunawarrtji, Irrungadji and Warralong, *Martumili Mob* gave Hedland audiences a chance to get to know the incredible people and experiences that make Martumili so special. For Martu, art making is about so much more than paintings – the art centre is a space of community connection, story-telling, cultural celebration, and communal joy.





**JOO TAN**  
Exhibitions Coordinator



The Pilbara is known for its red dirt, salt and sand (and of course iron ore). I was new to this environment, and new to the Hedland community, and so were the residency artists Jacky, Sultana and Megan. The series of community basket-making, paper-dyeing and bottle craft opened up the lines of communication and ideas far greater than I ever saw possible. I experienced women sharing their stories, laughing and crying over the joy and sorrow of living in such a harsh environment, together creating a beautiful garden exhibition using the many vessels, leaves and sculptures made during the residency. The community arts project was celebrated as part of the IOTA.

Image provided by The Junction Co: artwork by Sultana Shamshi and Megan Kirwan-Ward, *TEND* exhibition, 2021.

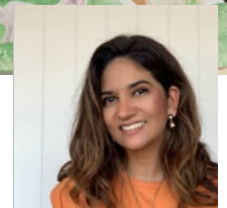
Over three months, resident artists Jacky Cheng, Sultana Shamshi and Megan Kirwan-Ward led a creative exchange of crafting, storytelling, and skill-sharing with Hedland's youth, culturally and linguistically diverse community, and those living with a disability. Together artists and community members explored crafting as daily ritual, coupling everyday materials and traditional techniques to create inspired work. The final result of the residency was an exhibition called *TEND*.

OCTOBER 2021



The Pilbara generates a spirit of entrepreneurship. It was my role to harness this in our young people and guide them to articulate a problem they'd observed and find a creative solution. Through a series of after-school Creative Enterprise workshops, participants identified their product, packaged it up, created an associated brand, and were able to pitch their creative product to 'investors'. I was constantly impressed with how they energetically put their new skills into practice, and congratulate the creative entrepreneurs who sold out of their products at the end of year Portside Twilight Christmas Market.

Image provided by The Junction Co: collaborative artwork for *Youth Arts Project* exhibition, 2021.



**RAQUEL CARVALHO D'AVILLA**  
Coordinator

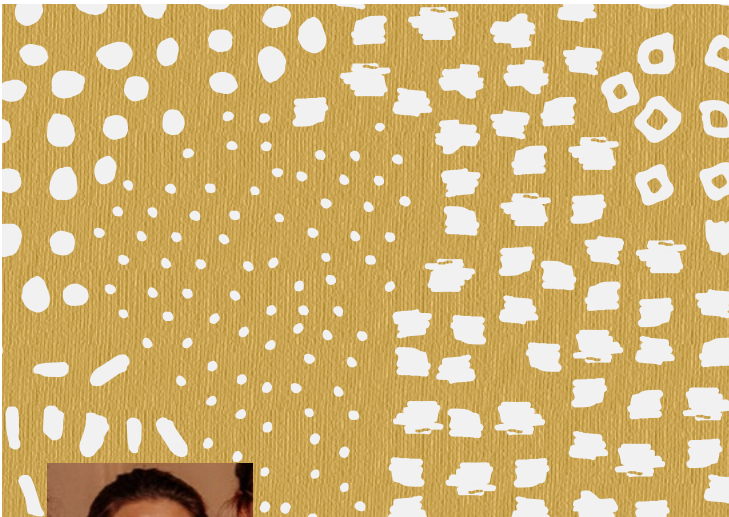
The Junction's young people creative development initiatives include the Creative Enterprise program (youth stream), an annual youth exhibition platform with associated development opportunities, weekly Art Antics sessions for toddlers and parents, a school holiday art+craft program (some sessions are done in partnership with Awesome Arts), and a range of targeted young people workshops during Youth Week and with visiting artists.

## NOVEMBER 2021



There are a few key marketing dates on our Portside Soap social enterprise calendar, most notably Mother's Day and Christmas. (Unfortunately, whilst the Junction was selected to attend the Big Design Market end of 2021, the pandemic got in the way.) The Portside Twilight Festival was magical; I loved sharing with customers how the soap range is hand-poured in small batches directly from the Junction's soap studio, and uses high quality, natural and ethically sourced ingredients making it ideal for all skin types. Experiencing the vibe as a stallholder, and with my maker peers, was inspiring, especially seeing how the community value locally made products!

Image provided by The Junction Co.: artwork from Portside Soap's Pilbara Worker packaging, 2021



**MELANIE NEVILLE**  
Production Officer,  
Portside Soap

In partnership with an energetic group of businesses and community organisations, the Junction coordinates Hedland's Portside Town Team to create a common, positive narrative and identity for the West End, encourage longer visitation to the area, and build a sense of community among our neighbours and broader community. Portside initiatives include the Twilight Christmas Markets, movies, live music, localised activities, and capacity-building tools.

## DECEMBER 2021



Amy was given the opportunity to establish a new community painting program as she facilitated weekly Art Antics sessions. In 2021 Paint and Sip evenings were trialed at the Courthouse Gallery+Studio. "I was supported in expanding and stretching my facilitator skills, and learnt how to paint foundational landscape scenes for others to follow." In 2022, Lisa grew the program leading participants to build new skills and test their boundaries in the arts. "I love watching windows open with the people I teach and see their confidence build, they can create beautiful artwork."

Image provided by The Junction Co.: artwork by Lisa Goessmann, Paint+Sip workshop, 2022.



**AMY MORTON + LISA GOESSMANN**  
Creative Practitioners

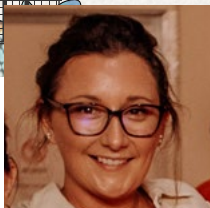
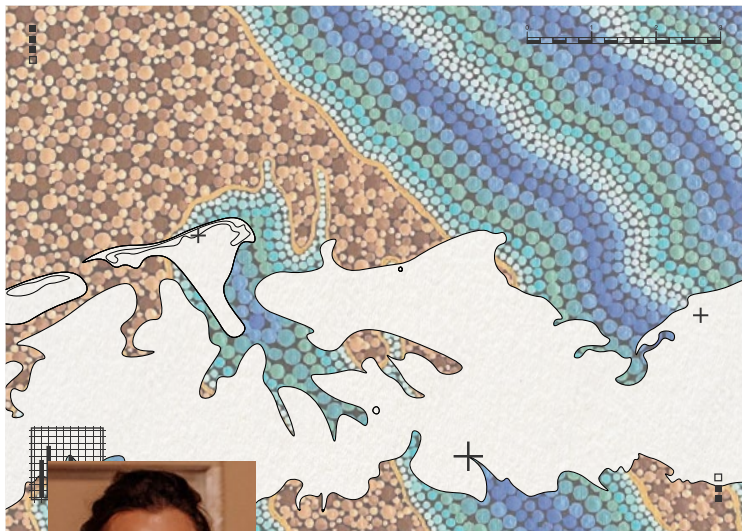
The Junction's Connecting Communities program stream brings people together, to actively improve community membership and engagement, to encourage a balance of work and play, and to help strengthen a sense of identity that is recognisably 'Pilbara'. There is something for everyone, across different parts of the community and the region, from Hedland to Newman, Marble Bar to Tom Price and everywhere in between.





For each different exhibition, workshop, event and service the Junction presents, it means a new opportunity to create visually appealing (and functional) collateral. My favourite part of my role is working with the Junction team, artists and web developers, and creatively communicate information to audiences. For the Radius exhibition I was able to deviate from the standard invitations and work my magic to incorporate all the participating artists artwork into topographical maps, a play on the exhibition curatorial theme. The Radius collateral was bold, attractive and elements could be used throughout the exhibition as additional design features.

Image provided by The Junction Co.: marketing material with artwork by Lauren Greatorex, *Radius 3.0* exhibition, 2022.



**SAMANTHA BOON**  
Communication  
Coordinator + Graphic Designer

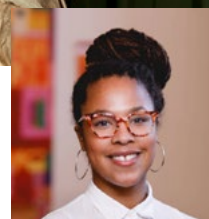
The Junction uses a number of social media channels, website, e-newsletters and publishes print collateral to connect and communicate with audiences. We strive to ensure that all our up-to-date information can be easily accessed; whether you're using resources through our online learning portals, listening to a podcast or describing an artwork, on a walking tour, or watching one of our many subtitled videos, we are committed to providing content that is innovative and accessible.

FEBRUARY 2022



I feel great growth in my leadership capabilities as a result of the Regional Arts Network Creative Leadership Program. When I first started with the Junction, I participated in the foundational leadership modules. Then I organised the module three complex leadership session facilitated by Dr Shona Erskine, in Newman in 2022, for the Junction and Martumili teams. The course provided an opportunity to navigate real-life scenarios, work as a team to evaluate current leadership practices, and gain creative leadership theoretical knowledge. These skills were utilised when working with stakeholders to coordinate the new Pilbara Creative Disability Inclusion Program.

Images provided by the artist.: artwork by Lea Macmanus, *Meat Feathers*, *The Jury Art Prize*, 2022.



**LESLIE RIGOT**  
Regional Coordinator

The Junction strive to empower regional creative industries. The Pilbara Creative Disability Inclusion Program is a social inclusion program, developed in partnership with regional disability service providers, that builds individual and collective capacity, skills and knowledge for those living with a disability. The wholistic program provides weekly creative workshops to EPIC and Roebourne Regional Prison, professional development for carers, alongside the development of a disability inclusion resource for arts workers.





**ELISA TRIFUNSKI**  
Regional Curator



Over the past three years, I led the Junction's artistic excellence program, a raft of development activities that address the challenges faced by regional creative practitioners: how to write successful grant applications, seminars exploring arts sector trends, issues and solutions, technical skills workshops, art critique forums, training videos and opportunities to exhibit experimental work. I'm excited about the COMPASS program as it wraps all these learnings into one; regional artists reflect their region's unique experiences and narratives, and it provides COMPASS creative practitioners with the tools to harness and unleash their expertise.

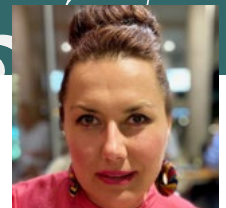
Image provided by artist: artwork by Chelsea McAuliffe, One Moment with You, Radius 3.0 exhibition, 2022.

The COMPASS course launched as part of the *Radius* public program, with six online sessions and supporting resources: What it means to be a regional artist (Jacky Cheng), Strategise and Organise: Implementing systems (Katie Evans), Working on Country: Ethics and Values (Shandell Cummings), Your work: What is it and why is it relevant? (Erin Coates), Communication and building your practice (Elise Batchelor), Relationships: Building your professional network and establishing your place within your artistic community (Jacky Cheng and Belinda Cook). COMPASS develops critical areas that form a more holistic and artistic practice outside of creating.



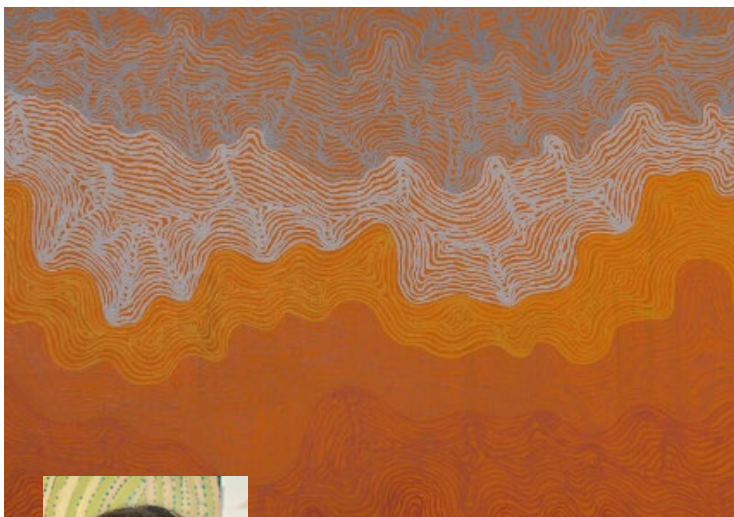
Creating new opportunities for regional creatives is exciting, specifically leading the EVOLVE public art capacity-building program - which teaches Pilbara artists to adapt their practice to create large-scale and complex artwork and tell authentic regional stories. I am pleased to see the first round of participants win commissions in Newman and Hedland. More recently EVOLVE participants were mentored by acclaimed artist Chris Nixon to develop a public art design for a ToPH project in Marapikurrinya Park. The Portside Town Team and The Junction Co. led the community engagement and public art consultation. It was great seeing community involvement in a selection process.

Image provided by artist: artwork by Samantha Boon, Marapikurrinya Park sea containers, 2022.



**PATRYCJA ROSINSKA**  
Activation Coordinator  
+ A/Executive Officer

EVOLVE: Pilbara Public Artist Development Program launched as a pilot series of workshops working through real-time briefs enabling participants to learn how to submit successful public art EOIs. Following the 2021 pilot program in Karratha, Hedland and Newman, EVOLVE shifted into a new phase, the continuation of capacity-building regional practitioners through online learning and ad hoc one and two day workshops commissioned by LGAs, developers and other agencies.



The Jury Art Prize had so many highlights in one single event: having Tui Raven, Bruno Booth and Belinda Cook judge the Prize and announce the winners during a livestream was thrilling; seeing the crowds try and get their face 'on tv' and share their favourite artist; having artwork accessible via audio descriptions; guiding the Junction team to deliver this premium art prize to audiences across the globe, and a celebration to match; and, regional artists from across the State submitting their artwork with very few barriers made me very excited for the future of this growing regional arts prize.



**VALERIA SCOPONI**  
 Courthouse  
 Gallery+Studio Manager

Image provided by The Junction Co.: artwork by Wendy Warrie, *After the High Tide*, The Jury Art Prize, 2022.

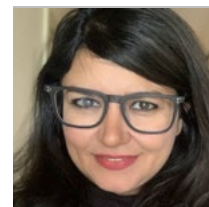
Over three months, resident artists Jacky Cheng, Sultana Shamshi and Megan Kirwan-Ward led a creative exchange of crafting, storytelling, and skill-sharing with Hedland's youth, culturally and linguistically diverse community, and those living with a disability. Together artists and community members explored crafting as daily ritual, coupling everyday materials and traditional techniques to create inspired work. The final result of the residency was an exhibition called *TEND*.

JUNE 2022



Tucked away in Hedland's only public Ceramics Studio, part of the Portside Precinct, I help make creativity possible. After my annual refresh of the Studio making sure everything is in order, the community are welcomed into the space to learn how to transform a lump of clay into a work of art, a functional object, or perhaps even nothing, as the act of playing with the clay was all that was required. I love to share my knowledge and help guide young and old to use the equipment and apply new techniques to their practice. To see beginners grow and become finalists for Art Prizes and be part of exhibitions is super cool.

Image provided by The Junction Co.: artwork by Karren McClure, *Liquid Twilight*, The Jury Art Prize, 2022.



**NADIA HANNA**  
 Ceramics Coordinator

The Junction's young people creative development initiatives include the Creative Enterprise program (youth stream), an annual youth exhibition platform with associated development opportunities, weekly Art Antics sessions for toddlers and parents, a school holiday art+craft program (some sessions are done in partnership with Awesome Arts), and a range of targeted young people workshops during Youth Week and with visiting artists.

# Statement of Profit or Loss Comprehensive Income

# FINANCIAL

The Junction Co.  
For the year ended 30 June 2022  
Cash Basis

	Notes	2022	2021
<b>Income</b>			
<b>Self Generated Revenue</b>			
Sales - Market Stalls		3,936	300
Sales - Memberships		5,874	2,342
Sales – Retail, Exhibitions & Artworks		158,566	150,421
Sales - Workshops		37,050	31,336
<b>Total Self Generated Revenue</b>		<b>205,427</b>	<b>184,399</b>
<b>Grant TOPH</b>			
Management Fees from TOPH		471,000	500,000
<b>Total Grant TOPH</b>		<b>471,000</b>	<b>500,000</b>
<b>Donations</b>			
BHP Funding		263,246	121,558
Country Arts Funding		112,234	28,101
Hedland Youth Art Prize		0	720
Jury Art Prize Funding		27,450	38,390
Other Revenue		0	1,162
Other Revenue - Donations		1,182	28,636
Other Revenue - Events		743	13,018
Other Revenue - Grants		185,201	23,386
Other Revenue - Programs		5,616	47,501
Smaller Funding Sources and One Off		4,350	0
TOPH COVID-19 Grant		0	1,000
<b>Total Donations</b>		<b>600,023</b>	<b>303,472</b>
<b>Other Income</b>			
ATO Cash Flow Boost		22,494	48,762
Interest Income		8	221
<b>Foreign Currency Gains and Losses</b>			
Realised Currency Gains		106	-44
<b>Total Foreign Currency Gains and Losses</b>		<b>106</b>	<b>-44</b>
<b>Losses</b>		<b>106</b>	<b>-44</b>
<b>Total Other Income</b>		<b>22,607</b>	<b>48,939</b>
<b>Total Income</b>		<b>1,299,057</b>	<b>1,036,810</b>

FULL FINANCIAL REPORTS AVAILABLE UPON REQUEST



# Statement of Profit or Loss and Other Comprehensive Income (Cont.)

The Junction Co.

For the year ended 30 June 2022

Cash Basis

	Notes	2022	2021
<b>Less Cost of Sales</b>			
<b>Cost of Sales</b>			
Opening Stock		27,494	0
Contractors and External Consultants		104,712	119,777
Exhibition Direct Costs		115,368	95,443
Membership Direct Costs		541	636
Other Direct Costs		4,967	26,989
Retail Direct Costs		41,538	28,729
Vend Discount Account		4,022	2,659
Workshop Direct Costs		23,327	37,798
Closing Stock		-156,681	0
<b>Total Cost of Sales</b>		<b>165,287</b>	<b>312,032</b>
<b>Total Cost of Sales</b>		<b>165,287</b>	<b>312,032</b>
<b>Gross Profit</b>		<b>1,133,769</b>	<b>724,779</b>
<b>Less Operating Expenses</b>			
<b>Net Profit</b>		<b>409,259</b>	<b>17,203</b>

FULL FINANCIAL REPORTS AVAILABLE UPON REQUEST

## Auditor's Opinion

In my opinion, in all material respects the financial position of the The Junction Co. as at 30<sup>th</sup> June 2022 and of its financial performance for the year ended on that date complies with the accounting policies described in Note 1 to the accounts.

Signed at Roleystone this 1<sup>st</sup> day of December 2022.



Ray M Manus MIPA AFA

ARALUEN ACCOUNTANCY  
57 Ridgehill Rise  
Roleystone WA 6111

# MEET THE TEAM

## THE BOARD

**Miranda Cecich**  
Chair

**Melinda McDonald**  
Vice Chair

**Sally Cruickshank**  
Secretary

**Yvette McLean**  
Treasurer

**Celeste Stephens**  
Board Member

**Shellie Blatch**  
Board Member  
(Finished September 2021)

**Danielle Airton**  
Board Member  
(Finished September 2021)

**Dr. Gemma Bothe**  
Board Member

**Patrycja Rosinska**  
Board Member

**Katie Evans**  
Executive Officer

## THE TEAM

**Katie Evans**  
Executive Officer

**Patrycja Rosinska**  
Activation Coordinator  
+ Acting Executive Officer

**Valeria Scoponi**  
Manger Courthouse  
Gallery+Studio

**Caitlin Dominey**  
Manager Courthouse  
Gallery+Studio

**Elisa Trifunoski**  
Regional Curator

**Kaiya Ashworth**  
Activation Manager

**Joo Tan**  
Exhibitions Coordinator

**Rose Barton**  
Regional Coordinator

**Leslie Rigot**  
Regional Coordinator

**Samantha Boon**  
Communications  
Coordinator  
+ Graphic Designer

**Nadia Hanna**  
Ceramics Coordinator

**Melanie Neville**  
Production Officer

**Amy Morton**  
Creative Practitioner

**Raquel Carvalho D'avila**  
Coordinator

**Adele Ahmat**  
Creative Practitioner

**Lisa Goessmann**  
Creative Practitioner

**Maya-Rose Chauhan**  
Ceramics Coordinator

## FINANCIAL SUPPORTERS



## MEMBERSHIPS



I can't thank the team at **THE JUNCTION CO.** enough for offering the Radius 3.0 exhibition program in 2022. What an incredible program for emerging artists like myself. I learnt so much in the mentoring sessions, it was an amazing experience. It has been a joy to have the opportunity to collaborate with The Courthouse Gallery+Studio and has benefited my design business by creating an outlet to **SHOWCASE** my artwork and bring it to the public in this way. It has been a positive experience overall, they are a joy to work with, offering valuable support to me as a local artist. The opportunity to do something different **AND CONNECT** with other people and learn a new skill was fabulous! Being asked to judge the Jury Art Prize at The Junction Art Center in Port Hedland was a **FANTASTIC** experience. The exhibition is a high point in the regional arts calendar and the calibre of work from the artists involved is breathtaking. This extensive and proactive team is efficient with utmost professionalism and an incredible role model in our progressive society today with majority women as leaders in the sector. I believe the team champions and promote wellness, educating and facilitate **CREATIVE ENDEAVOURS** for the wider community, emerging and professional artists and more importantly, unite as an indefatigable team that always deliver high quality projects. The Junction is an organisation that has always brought inspiration, peace, non-judgement, and inclusivity. It is in the **HEART OF CREATIVITY FOR** Hedland. Your program provides **THE** beacon of light in our harsh **PILBARA** lives - I can connect with my neighbours and the workshops give me new creative skills, which is wonderful to see in a regional town.

I can't thank the team at **THE JUNCTION CO.** enough for offering the Radius 3.0 exhibition program in 2022. What an incredible program for emerging artists like myself. I learnt so much in the mentoring sessions, it was an amazing experience. It has been a joy to have the opportunity to collaborate with The Courthouse Gallery+Studio and has benefited my design business by creating an outlet to **SHOWCASE** my artwork and bring it to the public in this way. It has been a positive experience overall, they are a joy to work with, offering valuable support to me as a local artist. The opportunity to do something different **AND CONNECT** with other people and learn a new skill was fabulous! Being asked to judge the Jury Art Prize at The Junction Art Center in Port Hedland was a **FANTASTIC** experience. The exhibition is a high point in the regional arts calendar and the calibre of work from the artists involved is breathtaking. This extensive and proactive team is efficient with utmost professionalism and an incredible role model in our progressive society today with majority women as leaders in the sector. I believe the team champions and promote wellness, educating and facilitate **CREATIVE ENDEAVOURS** for the wider community, emerging and professional artists and more importantly, unite as an indefatigable team that always deliver high quality projects. The Junction is an organisation that has always brought inspiration, peace, non-judgement, and inclusivity. It is in the **HEART OF CREATIVITY FOR** Hedland. Your program provides **THE** beacon of light in our harsh **PILBARA** lives - I can connect with my neighbours and the workshops give me new creative skills, which is wonderful to see in a regional town.