



THE JUNCTION CO

engage grow empower

regional creative
industries.

Annual Report
2022/23

Covers: Designed and
illustrated by Samantha Boon,
The Junction Co.

Our respects:

The Junction Co.'s main office is located in Port Hedland, in the northwest Pilbara region of Western Australia, on beautiful Kariyarra Country. We acknowledge the Kariyarra, Ngarla and Nyamal people as the Traditional Custodians of these lands and waterways and the Traditional Owners of Country throughout Australia. We recognise their strength and resilience and pay our respects to their Elders past, present and emerging.

1

OUR RESPECTS

2

CONTENTS

4

ABOUT US

- + VISION
- + MISSION
- + PURPOSE
- + STRATEGIC PLAN

5

CHAIR REPORT

7

CEO REPORT

9

THE BOARD

- + THE TEAM

14

**22/23
HIGHLIGHTS**

- + TOWN TEAM MOVEMENT
- + THE COLLAB PROJECT
- + MENTAL HEALTH WEEK
- + MAMA STITCH
- + PORTSIDE TWILIGHT CHRISTMAS
FESTIVAL
- + THE JURY ART PRIZE

26

**ARTISTIC
EXCELLENCE**

- + EXHIBITIONS
- + COMPASS
- + ARTIST-IN-RESIDENCE

35

**CONNECTING
COMMUNITIES**

- + PROGRAMMING
- + CREATIVE ART DAY
- + CERAMIC COURSES

40

**CREATIVE
ENTERPRISE**

- + COLOURS
- + START-UP

45

**FINANCIAL
DOCUMENTS**

- + TREASURER REPORT
- + PROFIT AND LOSS

48

**WHAT WE'VE
DONE**

- + ACKNOWLEDGMENTS

50

THE NUMBERS

- + PARTNERS

A vibrant outdoor community event, likely a festival or picnic, taking place on a grassy area under large trees. Many people, including families and children, are sitting on blankets on the grass. Large umbrellas in various colors (red, yellow, white) are open, providing shade. The atmosphere is sunny and lively. The text is overlaid on the upper left portion of the image.

“

Throughout this year, our organisation has experienced tremendous growth. We have achieved numerous milestones, always dedicated to enhancing our community while actively seeking opportunities to empower and support our local and regional artists.

VALERIA SCOPONI
Regional Manager

About Us

The Junction Co.

The Junction Co. is an innovative, Pilbara-based not-for-profit arts organisation committed to driving positive change in the regional creative landscape. Our vision is clear: to engage, grow, and empower the vibrant creative industries that define the Pilbara region.

At the heart of The Junction Co. is a team of passionate, creative, and capable 'blue sky thinkers.' These individuals are not just team members; they are locals deeply rooted in the Pilbara, living, breathing, and intimately knowing the community we all call home. Their collective expertise forms the backbone of our organisation, contributing to the dynamic and authentic character of our initiatives. In addition to our foundational values,

we pride ourselves on fostering creativity, embracing innovation, and encouraging collaboration. These principles are not just ideals but are woven into the fabric of every project and initiative we undertake. As we reflect on our accomplishments and look toward the future, these core values will continue to guide our endeavours, ensuring that The Junction Co. remains a beacon of creativity and empowerment in the Pilbara region.

Vision

To engage, grow and empower regional creative industries.

Purpose

To make a creative difference.

Values

Growth + Empowerment

Capacity to build through connection with creativity, encouragement and passion.

Authentic + Genuine

Do what we say, say what we do, are respectful, honest, value all contributions, and act with integrity.

Accountability

Responsive to needs, and apply an agile and adaptive approach.

Mission

To advocate and connect creatives with workspace, learning opportunities and networks, to uplift their endeavours and create an environment in which both local community and creatives can support each other.

Evolutionary

Embrace intrigue, and deliver unexpected and captivating experiences.

Performance

Hold each other to account, are enablers for high performance in the team and other creatives.

Belonging + Connection

Model transparency, diversity, and inclusivity, celebrate and respect differences.

Strategic Priorities

Engage

Strengthen communities through creativity.

Grow

Develop thriving creative practices.

Empower

Advocate and celebrate creative industries.

Our Business

Nurture a high performing culture.



Miranda Cecich

CHAIRPERSON

I am honoured to present The Junction Co.'s Chairpersons Report for the year, as we reflect on a year of transformation and celebrate our unwavering commitment to community engagement in a challenging landscape of not-for-profit operation in the Pilbara.

In the ever-evolving world of regional creative industries, we understand that change is not just inevitable but it is the catalyst for growth and innovation. Over the past year, The Junction Co. has undergone transformation, and we have adapted to these changes with resilience and determination. This adaptability is testament to our organisation's strength and the dedication of our team.

I would like to introduce our new additions to the local Port Hedland Board. Claire Boyce, Kylie Unkovich, Tina Scott and Caine Otley, all bringing their expertise, wisdom and fresh perspectives. We bid farewell to

Melinda McDonald whose contributions have been invaluable. Additionally, I would like to acknowledge our former Executive Officer, Katie Evans who has relocated to Melbourne from the Pilbara, her dedication has been pivotal in our journey.

We are excited to welcome our new CEO, Sandy Harvey who has already demonstrated exceptional leadership and vision. Under her guidance The Junction Co. is poised for a remarkable future and will navigate us through the challenges ahead.

In a region as unique and diverse as the Pilbara, operating a not-for-profit organisation comes with its own set of challenges. However, these challenges have only strengthened our resolve to fulfill our mission. We have proudly weathered these challenges and emerged as a beacon of creativity delivery in the Pilbara.

Pictured: Miranda Cecich, The Junction Co. Chairperson.
Image courtesy of Miranda Cecich.

One of our key achievements this year has been the successful retention, attainment and recruitment of our core staff and leadership; introducing new talent to both the Board and team to complement our existing talent. This strategic balance enhances the skill set of our team and enables us to serve the needs of our community and key stakeholders more efficiently.

Our dedicated team of creatives and business minds continues to develop exciting programs with a strong focus on inclusivity and sustainability. The success of events like **The Jury Art Prize**, which received acclaim as a world class regional event, showcases our commitment to excellence. These programs are not just about the art; they are about engaging and connecting with our community.

Collaboration has also been at the heart of our success and will be a key focus for our future endeavours. We recognise the importance of joining forces with like-minded organisations and partners to amplify impact. And exemplary instance of this is our strengthened, renewed and expanded partnerships with Town of Port Hedland (ToPH) and BHP.

Our collaboration with ToPH has enabled us to bring our vision – to engage, grow and empower regional creatives – to life. Together, we have embarked on innovative and accessible projects such the **Arts and Culture Tour** through the **Welcome to Portside App**. This tour not only showcases the vibrant art and culture scene in Hedland but also highlights our commitment to inclusivity and accessibility.

Our partnership with BHP has opened doors to remarkable opportunities. We had the pleasure of hosting Federal Minister for Resource and Minister for Northern Australia, the Hon. Madeleine King MP in collaboration with the Chamber of Mineral and Energy WA. This event allowed us to showcase the incredible work we do as well as showcase regional creative industries in the Pilbara.

These collaborations are not merely about working together, they are about combining strengths to achieve shared goals. We have seen the transformative power of collaboration in the success of programs such as **Radius 4.0**, **The Jury Art Prize**, **Act Belong Commit Ebb+Flow** to name just a few.

Our dedication to community engagement throughout the Pilbara remains core to our success. We believe in the power of art and culture to bridge gaps and foster a sense of belonging. Our programs and events over the next year and beyond will continue to create numerous opportunities for regional creatives and communities to participate, connect and engage.

As we continue to serve our community and work towards a vision, we want to express our gratitude for your unwavering support. The Junction Co. remains committed to fostering creativity, engaging the community and driving sustainability.

Thank you for being a part of our journey. We look forward to the future with optimism and enthusiasm.



Sandy Harvey

CHIEF EXECUTIVE OFFICER

As Chief Executive Officer of The Junction Co., it has been a pleasure to work with the community and establish and develop relationships with other organisations who value our vision to engage, grow and empower regional creative industries.

As part of Regional Arts WA in the Regional Arts Network, we bring together arts and cultural bodies from each region in Western Australia to facilitate growth, stability and structural integrity within our organisations.

The Junction Co. team members each bring a wealth of experience and passion. Our team is made up of artists,

makers, business owners, designers, strategists, and community engagement experts, who combined realise the programs, exhibitions and events delivered across the Pilbara.

Each individual brings an incredible depth of knowledge to The Junction Co. and the Courthouse Gallery+Studio, which is demonstrated in the outstanding outcomes achieved together this year. We ensure high quality results with sophisticated operating systems, being paperless, cashless, on the cloud and using best practice software. We are completely mobile, a fresh and dynamic organisation, and geared for agility.

Pictured: Sandy Harvey, The Junction Co. CEO. Image courtesy of Sandy Harvey.

The year was filled with many exciting and high-quality programs and events that created opportunities for regional creatives and communities to participate, connect and engage. The Team delivered a fabulous, high standard art exhibition program with **Radius 4.0, The Jury Art Prize 2023** and **Act Commit Belong Ebb+Flow** as a highlight, as well as an amazing series of events including the Town Team Movement State Conference and Sundowner, and the **Portside Twilight Christmas Festival**. They also delivered community workshops such as **Paint+Sip, Slump+Hump**, youth activities from the **Portside School Holiday Program**, weekly **Art Antics** for young children, **COLOURS** inclusivity workshops in partnership with EPIC plus a **Creative Youth Day**, the **Community Art Day** and **Open Borders: 26th Parallel and Beyond** exhibition, shining the light on local talent.

The team also introduced a series of new workshops including **Hobbies and High Tea** and **Arting Around** for our senior community members. Our team was busy with delivering online capacity building programs like **EVOLVE: Public Artists Development Program** and **COMPASS: Creative Practitioner Development Program**.

The team also launched the **Art and Culture Tour**, a new walking tour, as part of the **Welcome to Portside App** and **The Collab Project**, a series of garments designed by three local artists. Once again they delivered the successful and popular Ceramics program and launched the first ceramics product – a soap holder for our creative and social enterprise **Portside Soap**.

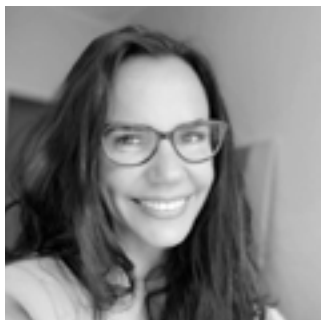
The year was filled with many amazing opportunities with other highlights:

- The Junction Co. had the pleasure to host Federal Minister for Resources and Minister for Northern Australia, the Hon Madeleine King MP, in collaboration with the Chamber of Mineral and Energy of WA, and CME members. It was wonderful to showcase the Hedland creative sector and the amazing work of the The Junction Co. to engage, grow and empower regional creative industries.
- The **Start Up Program**, a creative enterprise program for young people at Hedland Senior High School.
- The Junction Co. and Portside Town Team were proud to launch their newest tour as part of the **Welcome to Portside App**, the **Arts and Culture Tour**. This is an innovative and accessible tool that allows everyone to discover Hedland's art and culture scene.

After a successful year with community participation continuing to grow, we are excited about the way forward, continuing to work with the Town of Port Hedland and our other partners to continue serving the Hedland and broader Pilbara and regional communities with a calendar full of exciting and diverse programs and events, continuing to share all the amazing activities we have on offer.

In 2022-23, The Junction Co. achieved numerous milestones, successfully realising many of our stated goals through the highlighted program initiatives.

The Board



Miranda Cecich CHAIRPERSON

Karratha / Perth

Miranda is versed in the Human Capital space and has specialised in the delivery of transformational human resource and organisational development projects. She has managed engagements to develop operating models, aligning operations to strategic objectives and identify performance improvements in large, complex organisations. Miranda has extensive experience managing senior stakeholders and large teams. Miranda has worked within the Resource, Health and not-for-profit (NFP) sectors, most recently in the legal and community service environment. From 2015 she has worked in a variety of roles as both Acting CEO and CEO for Pilbara based NFPs.



Sally Cruickshank Secretary

Perth

Sally is a creative entrepreneur and visual arts educator. Now based in Perth, Sally lived in the Pilbara for nearly 10 years and was an active member and facilitator of The Junction Co. team specialising in teamwork facilitation, ukulele and resin art. Sally is the Secretary of the TJC Board and is passionate about empowering our communities in the creative industries.



Melinda McDonald VICE CHAIRPERSON

Port Hedland

Within BHP Rail Operations, Melinda serves as a dedicated leader in Continuous Improvement. Beyond her professional role, Melinda is driven by a profound commitment to advancing inclusion and diversity, not only within the resource sector but also in the local community. Her impactful influence on The Junction Co. plays a pivotal role in shaping it into a warm and inclusive space for the people of Hedland and the broader community, reflecting her dedication to fostering a sense of belonging and diversity appreciation.



Yvette Fernandez Treasurer

Pilbara / Perth

Yvette is an accomplished businesswoman with over 30 years of diversified business experience and leadership in finance, accounting, logistics management and stockbroking. Having been a co-owner of Bridgestone Tyres in Port Hedland, and DZL wealth Advisers in Perth she fully understands the challenges faced by organisations in today's complex business world. In 2001, Yvette started her finance and wealth business from the ground-up. The business services clients within Australia and overseas. Yvette is adept at understanding people's needs having clients with differing situations and demographic environments.



Patrycja Rosinska

Board Member

Perth

Patrycja is a passionate and experienced arts and culture, community development and engagement, and place activation specialist with two decades experience delivering capacity building and community programs that create opportunities for the community to connect, engage and improve liveability of local communities. Patrycja was the former Activations Coordinator and also filled the role of acting CEO for The Junction Co. and brings a wealth of knowledge and background to the Board.



Tina Scott

Board Member

Port Hedland

A Port Hedland local for over 11 years, Tina is very passionate about everything local. Her background is in business management and development, finance and events. Tina loves enjoying the Pilbara lifestyle, photography and especially being part of our awesome community.



Cain Otley

Board Member

Port Hedland

Caine is the principle and licensee of a successful local real estate business and is well positioned to keep his finger on the pulse of our thriving community. With a degree in Business and Marketing and living in Hedland for over 12 years, Caine has the knowledge, experience and passion to help The Junction Co. grow even more within our amazing region.



Clair Boyce

Board Member

Port Hedland

As an experienced business leader and community advocate, Claire holds a Master of Business Administration and a Bachelor of Arts in Economics and has worked in a number of management roles throughout Australia. Specialising in leadership, strategic planning, funding acquisition, and fostering business growth, Claire bridges the gap between vision and execution with a results-driven approach.

Along with being a passionate advocate for the local community, Claire is a board member for various Pilbara organisations, and currently co-owns and operates a proud Port Hedland based civil and earth moving company called Everything Earth, which in turn supports and sponsors numerous local not-for-profits and sporting clubs.



Dr. Gemma Bothe

Board Member

Perth

Dr. Gemma Bothe is the Senior Manager of Data and Continuous Improvement Grants at Lotterywest. Her expertise in social impact and strategy has provided Gemma with the tools to build and connect people and resources to drive positive, impactful change across the not-for-profit, government and industry sectors, resulting in lasting positive change. As member of The Junction Co. Board, Gemma leads the Junction's evaluation and social impact initiatives.



Kylie Unkovich

Board Member

Port Hedland

Kylie is a long term educator and member of the community with numerous businesses and volunteer connections. She has a keen interest in the arts and promoting entrepreneurship opportunities of up coming creative artists, especially the youth in Hedland.

With a Bachelor of Economics and Graduate Diploma in Business Marketing in addition to various Educational degrees, Kylie has a wide breadth of knowledge and experiences of working in corporate, departmental and volunteer settings which provides flexible thinking around the expansion of the arts in Hedland.



Sandy Harvey

Chief Executive Officer

Port Hedland / Perth

For more than 25 years, Sandy has had a diverse background in executive leadership fostering a culture of innovation, collaboration and community, and now leads the team as CEO. Being involved in several local organisations, she strongly believes in exploring new ways in which a positive impact can be extended. Sandy will continue to drive growth and deliver exceptional value to our stakeholders, meaningful change to our community, and bring a unique and fresh outlook to our organisation.

The Team

CEO	Sandy Harvey
ACTING CEO	Patrycja Rosinska Katie Evans
GALLERY MANAGER	Valeria Scoponi
ACTIVATION MANAGER	Amber Glasper Kaiya Ashworth
REGIONAL CURATOR	Joo Tan
BUSINESS SUPPORT	Laura Betts Skye Logue Raine Hakim
ACCOUNTS OFFICER	Gillian Roberts
EXHIBITIONS COORDINATOR	Jessica Brown Joo Tan
COMMUNICATIONS + GRAPHIC DESIGN	Samantha Boon
CERAMICS COORDINATOR	Nadia Hanna
CREATIVE PRACTITIONERS	Amy Morton Lisa Goessmann Mel Neville Christelle Orchard
PORTSIDE SOAP PRODUCTION OFFICER	Mel Neville



Pictured: South Hedland Square from the Town Team Movement WA State Conference. Image courtesy of the Town Team Movement.

Emphasising the significance of place leadership: activating and enriching communities and rediscovering the potency of collective action in driving positive change

#TogetherWeCan

Town Team Movement WA State Conference

August 2022

The 2022 Town Team Movement WA State Conference that was held in Hedland, with the Portside Town Team hosting the opening sundowner at Marapikurrinya Park and opened by Hon. John Carey BA MLA, Minister for Housing; Lands; Homelessness; Local Government.

This event was about living and embodying the Town Team principles through immersive experiences with many amazing addresses and place-making activities. The State Conference brought together leaders,

community activists, and government representatives. It served as a platform to explore innovative approaches for community empowerment and the fostering of vibrant neighborhoods.

Key Focuses:

- Highlighting the importance of place leadership to activate and enrich communities and implementing management strategies to support community development.
- The potency of collective collaboration and action to drive positive changes.
- The transformative potential a 'can-do' approach has in shaping communities and culture.
- Inspiring and empowering communities to form their own local town teams.
- Equipping attendees with practical takeaways such as new strategies, ideas and resources through an action kit.
- Using creative engagement techniques to discover innovative methods for engaging communities throughout changes.
- Examining challenges communities experience and the role of government in addressing them.
- Emphasising the importance of celebrating and understanding heritage and arts in community development.
- Using the impactful power of storytelling and vision-making in shaping a collective vision for communities.
- Exploring the role technology has in fostering economic and community development.

Bridging creativity and community: *The Collab Project* with local artists at the Courthouse Gallery+Studio

The Collab Project

September 2022

The Courthouse Gallery+Studio has partnered with talented local artists in Hedland to design a collection of t-shirts for men, women, and kids.

Pictured: A t-shirt designed by a local artist, on display and for sale in the Courthouse Gallery+Studio store. Image credit: Charismatic Photography.

Pictured: Three designs by local artists. Images courtesy of The Junction Co.

This collaboration highlights the connection between the Gallery+Studio and Hedland's creative community, providing these artists with a broader platform. The collection showcases the natural beauty of the Pilbara region through the artists' unique perspectives and mediums.

These t-shirts have been popular amongst locals and tourists, a second print run was made in June 2023. These are available to purchase in store at the Courthouse Gallery+Studio and online.

“

It has been a joy to have the opportunity to collaborate with the Courthouse Gallery+Studio and has benefited my design business by creating an outlet to showcase my artwork and bring it to the public this way.

Sarah Green
Artist

“

This artwork is inspired by a childhood memory of my times spent with my father searching for mud crabs during low tide. I distinctively remember walking through a very thick scrub of mangroves to get to his 'secret' spot. We didn't go hungry that day.

Lauren Greatorex
Artist



“

I have been so fortunate to be surrounded by some phenomenal out-of-the-box minds and mentors right here in Hedland that have helped me grow and establish myself as a creative, and my business as a graphic designer.

Samantha Boon
Artist



Mental Health Week

October 2022

Mental Health Week in Western Australia was conducted from the 8th to the 15th of October 2022, focusing on the theme: *Where we live. How we live. What we've lived.*

During this period, The Junction Co. team orchestrated a program aimed at fostering community involvement and creating avenues for connection and engagement.

These events were designed to encourage participation, offering diverse opportunities for community members to connect, engage, and prioritize mental well-being during Mental Health Week.

The activities were hosted in both Port and South Hedland and included:

- **Slow Down + Stitch**
- **Drawing Breath + Slow Looking**
- **Sound Healing in the Gardens**
- **Yoga**
- **Connectivity**



Pictured: Sound Healing event held in the Courthouse Gallery+Studio Gardens. Image courtesy of The Junction Co.



Mama Stitch

November 2022

The Junction Co. had the privilege of hosting **Mama Stitch**, a storytelling performance, at the Courthouse Gallery+Studio.

This experience celebrated mums for all their imperfections, challenges and triumphs. **Mama Stitch**, featuring performer-actor Georgia King, performer-musician Mark Storen and musicians Holly Garvey and Tom Garvey, was a heart-warming and intimate experience that was relatable to the audience. The performance was based on a collective of shared

stories reflecting the mothers of our local community, and were then brought to life as a headphone verbatim performance.

At the end of the performance, the audiences was encouraged to contribute to the project by writing their own anonymous 'Dear Mum' letter that was then later displayed in the space.

Pictured: Mama Stitch production. Image courtesy of the Town of Port Hedland.

Enchanting festivities at the *Portside Twilight Christmas Festival*: embrace the spirit of the community and celebrate the holiday season

Portside Twilight Christmas Festival

November 2022

The **Portside Twilight Christmas Festival** is an annual community event attended by over two-thousand people. This free and inclusive festival was organised by the Portside Town Team, The Junction Co., Port Hedland Visitor Centre, and the Town of Port Hedland.

This festival transforms Portside into a vibrant hub in the West End, fostering community connections and offering a relaxing, festive atmosphere. This event features the Portside Makers Market, the Wedge Street Footpath Markets, live music, food vans, a pop-up bar,

kids art and craft activities, and roving entertainment and performances. This festival supports local entrepreneurs and enhances the holiday season, providing a unique space for community engagement and celebration.

Pictured: Stilt walking roving performers from the Portside Twilight Christmas Festival.
Image credit: AB Videography.



Elevating regional creativity: *The Jury Art Prize* empowering artists, capturing the essence of Western Australia

The Jury Art Prize

May 2023

The Jury Art Prize is an annual art award in Port Hedland run by The Junction Co. and Courthouse Gallery+Studio, that has been running for the last four years. The award is open to all regional WA artists and consists of four prize categories:

Judges Prize
\$10,000 prize

The Jury Prize
\$10,000 prize

Patron Prize
\$3,000 prize

Kathy Donnelly Award
\$3,000 prize

The Jury Art Prize is Western Australia's most innovative regional art award. Providing a platform for artists to tell their authentic stories of their regional WA communities to Australia and across the globe, the Prize offers a diversity of opportunity and career acknowledgment. Utilising unique ways to connect audiences with the finalist

artworks, geography knows no bounds in providing accessible ways audiences can connect and engage with the very best artworks from regional WA.

This curated exhibition is open with no set theme and is judged each year by renowned industry professionals.

Pictured: A Jury Art Prize finalists artwork projected onto The Silver Star Train at the exhibition opening. Image credit: Charismatic Photography.



A Celebration of Cultural, Social and Geographic Diversity.

In recognition of the rich and raw artistic talent of regional Western Australia, the art prize embraces this platform and allows the artist and audience a place to connect through regional communities and celebration.

The audience can actively engage with and appreciate the arts, fostering creativity and cultural exchange within the community. We encourage artists from other regions to participate and connect with the vibrant Pilbara art community, to create a rich and diverse artistic network that extends beyond geographical boundaries.

Being The Junction Co.'s biggest events of the year, one of our key objectives is to foster meaningful connections, not only with the artists involved but also with audiences across the entire state.

We recognise that not everyone can physically attend the event or exhibition in person, especially considering the vast geographical expanse of regional Western Australia. However, we are dedicated to bridging this distance and ensuring that regional artists and audiences feel included and engaged by displaying the exhibition via an online virtual gallery and on the digital display at Yagan Square, in Perth CBD.

250+

Exhibition Opening
Event Attendies

1500+

Artwork
Submissions

14000+

The Jury Art Prize
Webpage
Views

PERTH CBD

Finalists works
showcased on
Yagan Square
Digital Tower

“

The Jury Art Prize takes the pulse of contemporary art practices across regional WA. The finalists represent the depth of expertise and creative rigour that our state has to offer, revealing the leading edge of artistic conversations relevant not only to local audiences but to broader national and international concerns of place, cultural connectivity and deep relationships to the lands we call home. This is the type of platform that regional artists need. To have their work contextualised in the

company of their peers, from emerging to incredibly senior practitioners, there are so many voices that need to be heard. For the judging panel, the winning works offered a clarity of vision that was fully complemented by the supporting text. The language that informs the visual impact of an artwork completes the experience.

Abdul-Rahman Abdullah
Judge, The Jury Art Prize 2023



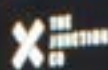
“

Creative Industries are recognised as being essential to economic growth and contributing to the formation of a creative community. Arts, culture and the creative industries contribute towards local employment, community wellbeing and vitality, tourism as well as economic development. They help us to explore and interpret stories, embrace intrigue and deliver unexpected and captivating experiences.

Sandy Harvey
CEO, The Junction Co.

THE JUNCTION CO
PRESENTS

THE JURY ART PRIZE 2023



Courthouse
Gallery+Studio



BHP



Rio Tinto



**Fostering Artistic
Excellence:** delivering
impactful experiences for
diverse audiences

Act Belong Commit Ebb+Flow

NORTH MIDLAND PROJECT



In 2021 and early 2022, **Act Belong Commit Ebb+Flow** brought together ten artists from different regions of Western Australia to delve into the ever-changing dynamics within regional communities. Community members in the North Midlands region collaborated with these artists to examine the transient nature of changes within our regional communities. **Act Belong Commit Ebb+Flow** harnessed the creative and collaborative aspects of the arts to delve into the past and project visions for the future of regional communities.

This exploration encompassed temporary fluctuations, including

periods of decline and growth, drought and rain, hardship and prosperity. The culmination of these ten residencies was an exciting co-designed exhibition.

The exhibition showcased the works of artists Lynda Howitt, Martine Perret, Sarah-Jane Eeles, Mikaela Castledine, Siobhan Kelley, Crystal Stacey, Diedre Robb, Sue Helmut, Nyree Taylor, and Marianthe Loucataris. These artists used various mediums, including visual art, written pieces, sculptures, and digital works, to convey how these uncontrollable factors ebb and flow within our unique regional areas.

Locomotive Dreams

Imagination in Motion | STUDIO A



The Junction Co. welcomed Studio A Artist, Thom Roberts, for a special Courthouse Gallery+Studio exhibition titled **Locomotive Dreams: Imagination in Motion**.

During the exhibition, the Pilbara community had the opportunity to explore the creative talents of professional artists living with disabilities and to contemplate the concept of belonging in the context of place and environment. **Locomotive Dreams** captured Thom Roberts' unique perspective on the world, where people, transportation, and infrastructure systems were envisioned as vibrant, interconnected entities.

In his artwork, trains took on the personas of familiar people, and people were transformed into trains,

each acquiring new identities that he portrayed enigmatically through his paintings.

The exhibition encouraged viewers to reconsider the significance of transportation and infrastructure in their daily lives, particularly in the resource-rich Pilbara region. As residents of an area surrounded by the world's largest bulk export port, long trains, large ships, and salt piles, Thom Roberts prompted us to reimagine these often overlooked structures and to recognise the relationships woven into our landscape that reinforced our sense of belonging. Living in regional areas, we were challenged to reconstruct and reevaluate the components of home through the lenses of kinship and connection.

Pictured: Act Belong Commit Ebb+Flow and Locomotive Dreams exhibition openings.
Image credit: AB Videography.



Open Borders

The 26th Parallel and Beyond



Open Borders: The 26th Parallel and Beyond was a project that encouraged young contemporary artists and performers residing in the Pilbara to craft artworks inspired by the theme of **Open Borders**.

These emerging artists were motivated to explore how living beyond traditional borders had influenced their perceptions of potential futures. The project sought to address questions such as 'What does it mean to reside in the Pilbara?' and 'are aspirations

for alternative futures beyond the 26th parallel taking shape?'

The project fostered research, investigation, contemplation, and discussion to nurture the development and refinement of artistic ideas and the creation of works.

As a result of their research and creative endeavours, these young artists developed artworks that was featured in a group exhibition in November 2022.

Radius 4.0

Cultivating the Future of Art: Nurturing Innovative Practitioners and Practices



In its fourth year, the **Radius** artist development and exhibition program continued to provide crucial support to early career regional artists from the Pilbara and Kimberley region. This program offered professional and peer mentoring, fostering collaborative learning experiences through digital and online platforms. **Radius** aimed to guide participants in enhancing their visual art skills, encompassing group mentoring, curation, and exhibition installation.

As part of The Junction Co.'s broader Artistic Excellence program, **Radius** played a pivotal role in creating pathways for regional artists to develop their skills as visual practitioners.

The fourth instalment of **Radius** titled **Radius 4.0**, showcased the work of dynamic artists, including Alice Boardman, Verity Page, and Jaimee Wright. These artists used their practices to explore diverse possibilities, resulting in meaningful and compelling art. Each artist contributed a unique and well-considered perspective to the exhibition, addressing themes such as attachment to place, community history, fragility, feminine strength, social issues, and artistic processes.

Radius 4.0 highlighted the artistic excellence of these emerging talents and their capacity to engage with important and thought-provoking subjects.

Pictured exhibition opening events from Open Borders: The 26th Parallel and Beyond, Radius 4.0 and Bobbi Lockyer: 4 Ocean. Image credit: AB Videography.

Bobbi Lockyer

4 Ocean

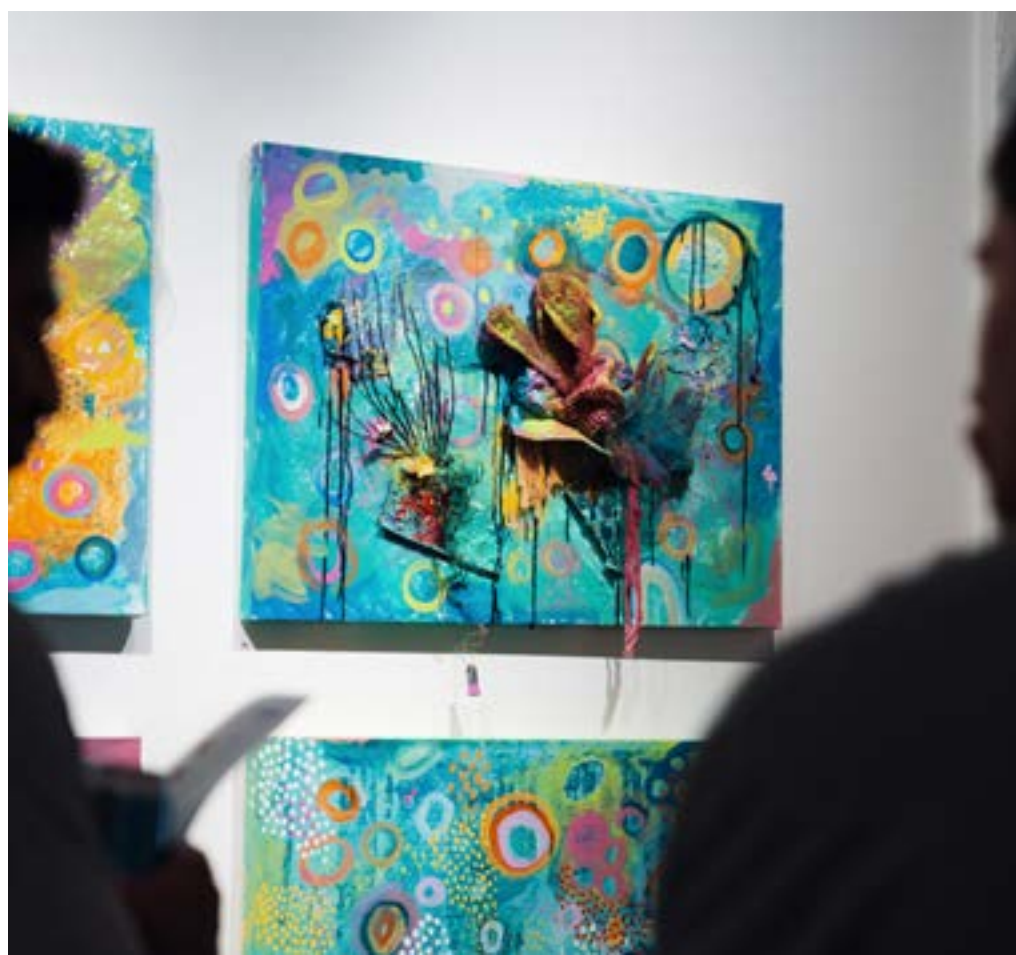


Bobbi Lockyer: 4 Ocean showcased a collection of artworks that delved into the theme of sustainability within our regional Australian communities. The presented works examined the profound impact of environmental negligence and pollution in our surroundings and across our oceans.

Bobbi Lockyer's ongoing exploration of the deep-seated effects of colonisation on saltwater communities led to the creation of these thought-provoking pieces. The series, which included paintings, mixed media, and textile works, reflected on the enduring connection of First Nations People to the ocean, emphasising their unwavering strength and commitment to our planet. **4 Ocean** served as a compelling reminder of our collective impact on the world and the consequences of both historical and contemporary actions.

Bobbi Lockyer, a proud Ngarluma, Kariyarra, Nyulnyul, and Yawuru woman, was born and raised in Port Hedland. She is an accomplished artist known for her work in various art forms, such as painting, photography, and fashion. By 2021, she had become a well-recognised name not only in Port Hedland but across Australia, earning the prestigious title of NAIDOC Artist of the Year. Her art and photography has received global recognition, including features in Vogue magazine and the Paris Fashion Week runway.

Bobbi Lockyer's journey began with her participation in **Radius 2.0**, The Junction Co.'s emerging artist launchpad in 2021, where she exhibited her work as part of a group exhibition. Since then, her career has seen significant success and growth through various creative projects.



The Jury Art Prize

WA'S Most Innovative Art Prize

The Jury Art Prize is a curated art prize exhibition that showcases artworks from artists working across regional Western Australia, culminating in an exciting show of unique perspectives.

These finalist artworks reflect the exceptional creative talents that continue to grow and thrive in regional and remote WA. Finalists were selected from all regions in Western Australia and was open to painting, photography, sculpture, and mixed media from Indigenous and non-Indigenous artists.

This year's exhibition event consisted of an outdoor multi-sensory landscape of light, sound and projection, before making your way into the Courthouse Gallery+Studio to view **The Jury Art Prize** finalists works.

2023 Judges

Abdul-Rahman Abdullah (Artist); Gemma Weston (Curator of the University of Western Australia Art Collection at Lawrence Wilson Art Gallery); and Sarah Wall (Curator at the Perth Institute of Contemporary Arts).

2023 Prize Winners

The Jury Prize (People's Choice): Paul Funtanini 'Casting with Nature - Red Morrel Burl'; **Judges Prize**: Melissa Sandy 'My Design'; **Patron Prize**: Lena Willalang 'Sandhills & Yellow Flowers'; **Kathy Donnelly Award**: Ruby Djikarra Alderton 'Miyapunu Guyu Ga Tathiny'.



Dear Don

South Hedland Projection Exhibition

The **Dear Don** Exhibition is about Donald William McLeod, a prominent activist for Aboriginal rights in the 20th century, gained recognition for serving as the spokesperson for the Marrngu people during the Pilbara Strike from 1946 to 1949. In the initial two years of the strike, McLeod worked as a laborer on the Port Hedland wharf, becoming more directly involved with the economic activities of the strikers when he relocated to Marble Bar in mid-1948.

Throughout the 1950s, McLeod lived in cooperative camps with the Marrngu, separated from the community but appreciated for sharing their living conditions and diet. McLeod continued his dedication to Aboriginal issues even after his split from the cooperative in 1959. Until his passing in 1999, he tirelessly campaigned for Aboriginal self-determination and the restoration of Section 70 of the Western Australian Constitution, playing a significant

yet often unrecognised role in the Aboriginal rights movement in Australia.

An exhibition featuring works by Roderick Sprigg and Chelsea McAuliffe was projected onto a large screen in the oval. The exhibition delved into the impact of advanced technology on creativity and the role of machines and technology in the creative industry, focusing on an AI system that generates imagery from language.

Dear Don presented a dialogue between Don McLeod, his letters, and contemporary artists using text-to-image AI systems, encouraging engagement with the words and images that shape our past, present, and future.

Artists were tasked with responding to letters written by Don McLeod, an integral figure in the 1946 Pilbara Strike, stored in the State Library of Western Australia.



Pictured exhibition opening events from The Jury Art Prize, Dear Don and Radius 4.0. Image credit: AB Videography, Charismatic Photography and courtesy of The Junction Co.

Stimulating Dialogue: exchange and collaboration

COMPASS

Second Edition: Creative Practitioner Development Short Course

COMPASS acknowledges the unique experiences and narratives that regional artists bring to their work and aims to equip creative practitioners with the tools to harness and unleash their expertise. This short course is tailored to boost awareness of contemporary practice themes and help artists better understand their roles as regional artists. It also offers opportunities to interact with and learn from multiple regional creative practitioners who have

navigated various challenges in their careers.

One of the outstanding benefits of **COMPASS** is the opportunity it provides for regional creative practitioners to network and build connections with fellow industry peers. This not only enriches their artistic journeys but also fosters a sense of community among artists in regional Western Australia.

Artist-in-Residence

Creative Spaces Benefiting the Community

The Courthouse Gallery+Studio, in partnership with The Junction Co. and North Midlands Project, offered a free workshop known as **Mark Making**. **Act Belong Commit Ebb+Flow** artist Siobhan Kelley shared her knowledge and artistic practice with various Hedland community groups.

During the workshops, participants were encouraged to explore the landscape through art, focusing on the emotions it evoked rather than precise representation. They used pencils and

graphite to experiment with marks that conveyed the essence of objects. Kelley preserved the drawings created during these sessions, which have now become a part of a collaborative artwork.

This collaborative effort has led to the creation of a new artwork, which will be displayed in an upcoming 2024 exhibition in Perth, demonstrating the program's significant impact on artistic development and community engagement.

Pictured: Act Belong Commit workshop. Image courtesy of The Junction Co.





Empowering Creative Practices: fostering lasting impact for communities



Slump+Hump Paint+Sip Hobbies+High Tea

Making Creativity and Social Connections

Creative workshops, including activities like **Paint+Sip**, **Hobbies+High Tea**, and **Slump+Hump**, were designed to introduce participants to new hobbies and interests.

These workshops offer opportunities to explore new pastimes, providing engaging ways to spend leisurely time. Additionally, they served as a means to relax and unwind after a stressful day, contributing positively to their overall wellbeing.



Art Antics

Weekly: Creative Kids Activities

Art Antics is a free weekly art and craft activity for children between 0-5 years of age that allows children to engage and experiment through creative play.

These workshops offer opportunities to explore new pastimes, providing engaging ways to spend leisurely time. Additionally, they served as a means to relax and unwind after a stressful day, contributing positively to their overall wellbeing.

Facilitators are continually coming up with new and exciting activities each



Arting Around

Weekly: Creative Workshops for our Seniors | South Hedland

Arting Around is a weekly creative workshop held at the South Hedland Library for the older and wiser members of our Hedland community.

for participants to get creative in and feel confident in learning something new. **Arting Around** promotes connection and creativity and gives its participants a good excuse to get out and about.

These workshops are aimed at providing a safe and welcoming space



School Holiday Program

Just for School Age Kids

Our School Holiday Programs consisted of a variety of indoor and outdoor events and workshops for school aged youth throughout the school holiday calendar. Some of these activities are

partnered with other local community groups such as JD Hardie Youth Centre and Care for Hedland, and can provide both an educational and creative inputs to the selected workshop.



Community Art Day

Celebrating the Influence of Art

For the 2023 celebration of **World Art Day**, which was themed 'art can be a performance', The Junction Co. organised the **Community Art Day** event at Shay Gap Park, South Hedland. Held during the school

holidays, this event featured 10 art workshops facilitated by local artists. The public was invited to partake in various art-making activities, celebrating the positive influence of art on the local community and beyond.



Ceramic Short Course

Building Skills and knowledge

A variety of short courses were run through the Ceramic Studio for people of all ceramic abilities. These short courses were designed to introduce new members of the community and encourage existing participants to return and build on their ceramic skills, gaining new knowledge and improving on their abilities. In these courses,

participants were able to socialise with like-minded people, engage with the facilitator in real time and walk away with a functional ceramic piece that showcased their new-found skill. These courses were very popular and allowed the community to access to the Ceramic Studio and all of its equipment.

Pictured: A variety of creative workshops and events. Image credit: Charismatic Photography and courtesy of The Junction Co.



Cultivating Diversity:

building engaged audiences for our vibrant creative community

COLOURS: A Creative Program for People with Disability

Creating Social Inclusion | EPIC

COLOURS is a holistic program that was developed in close collaboration with regional disability service providers with the aim to enhance individual and collective's capacities while fostering an exchange of skills and knowledge for those living with disabilities.

By promoting creative expression, exploring employment opportunities, and showcasing the art and culture of disabled individuals, **COLOURS** seeks to contribute to social inclusion, wellbeing, and vibrancy in regional WA.

The creative enterprise program is open to people in Hedland with a disability, and is designed to transform social inclusion and empower and uplift marginalised regional communities in Western Australia (WA).

Pictured: An attendee from EPIC with their artwork from the COLOURS weekly workshop. Image courtesy of The Junction Co.





Pictured: Start-Up Program
South Hedland High School
students in a workshop session
and at the Portside Mothers Day
Market. Image courtesy of The
Junction Co.



Start-Up

March - May 2023

Start-Up is part of The Junction Co's creative enterprise program, which gave South Hedland High School students the opportunity to learn how to create and run a successful market stall selling their own homemade products.

Over 8 weeks, facilitators worked with the students on product creation, sourcing suppliers, product packaging, branding and marketing, market stall set up and presentation, as well as sales.

Each of the students that signed up for the program was successful upon completion and walked away with

an inventory of their own hand made products, packaging and marketing materials and the knowledge of how to run a market stall, which they did at the Portside Mother's Day Makers Market.

The students were also given the opportunity to sell their products at the Courthouse Gallery+Studio.

“

I am a year 8 student in high school, from the Pilbara. I have always dreamed of having my own business one day. I never thought it was possible till now.

Charleece
Fiducia Sola Cura

“

I decided to make candles because it's a passion I have, and for me personally, having a nice smell is very relaxing and reminds me of old memories with loved ones and I want to share that experience with others.

Ashley
Moi Temps





Financial Documents

Treasurer Report

2022/23

I am pleased to report that The Junction Co. operated sustainably over the 2022-2023 year, recording a surplus of \$3,574. The significant variance in the profit figure from the preceding year is based on the change in accounting system from cash to accrual accounting, in addition to one-off operational expenses.

During the year, a series of Board-endorsed grant funding programs have been actively pursued and these will carry across to the 2023-2024 year. It is envisaged that there will be collaboration between The Junction Co. and the Art Gallery of WA and this will see some significant boost to funding income for the coming financial year. This additional funding combined with the current grant programs will place The Junction Co. in good stead for the year ahead.

Total income for the year was \$1,115,372, with gross profit at \$859,704 and operating expenditure equating to \$856,130.

Wages primarily remain the biggest expense at 61% of total costs, with Place Activation Project expenses of \$75,796, up from the previous year at \$21,511 and one-off costs incurred for Gallery Furniture and Equipment at \$10,834.

Looking at our Balance Sheet, capital investment of \$36,364 was invested into the purchase of a motor vehicle. This investment will help reduce vehicle hire costs as well create time efficiencies with local travel within Port Hedland and Karratha. Intangible benefits from this acquisition have been the ability to have signage of The Junction Co. and its funding partners logos placed on the vehicle which will foster and harness the continued recognition of the existing relationships.

Cash reserves remain strong at \$495,537 for the year ended 30 June 2023.

The 2023 financial statements have been audited by Ray McManus and an unmodified audit opinion has been issued.

Yvette Fernandez
Treasurer
The Junction Co.

Pictured previous pages, Bobbi Lockyer: 4 Ocean exhibition opening. Image credit: AB Videography.

Statement of Profit or Loss and Other Comprehensive Income

The Junction Co.

For the year ended 30 June 2023

	2023	2022
Income		
Total Trading Revenue	176,700	205,368
Total Grant TOPH	578,000	358,500
Total Donations	360,223	556,000
Total Other Income	449	-98
Total Income	1,115,372	1,119,770
Less Cost of Sales		
Cost of Sales		
Opening Stock	43,649	27,494
Contractors and External Consultants	8,111	96,371
Exhibition Direct Costs	151,462	115,418
Retail & Other Direct Costs	88,948	75,042
Closing Stock	-36,502	-43,649
Total Cost of Sales	255,668	270,676
Total Cost of Sales	255,668	270,676
Gross Profit	859,704	849,094
Less Operating Expenses	\$	\$
Total Operating Expenses	856,130	728,661
Net Surplus	3,574	120,433

Signed at Roleystone this 9th day of October 2023.



Ray M Manus MIPA AFA

ARALUEN ACCOUNTANCY
57 Ridgehill Rise
Roleystone WA 6111



Our contribution to this thriving arts community: engage, grow and empower

JULY 2022

School Holiday Family Market;
Me+My Marvellous Mask;
Portside Movie Night: Bran Nue
Dae; Morning Yoga Session;
Paint for Teens. Art Antics;
Elevate: Getting You Market
Ready; Slump+Hump; Paint+Sip;
Art Antics.

AUGUST 2022

Ebb+Flow Artist in Residency;
Ebb+Flow Artist + Curator Talk
Art Antics; Ebb+Flow Exhibition
Opening; Ebb+Flow Mark
Making Workshop; Art Antics;
Ebb+Flow Mark Making
Workshop; Ebb+Flow Mark
Making Workshop; Ebb+Flow
Mark Making Workshop; Art
Antic; Ebb+Flow Mark Making
Workshop; Art Antics; Town Team
WA Movement State Conference
Opening Sundowner; Art Antics.

SEPTEMBER 2022

Art Antics; Art Antics; Art Antics
Elevate: Creative Content Ideas
for Instagram; Art Antics; The
Collab Project; Textiles Art;
Wearable Art; Cultural Weaving
Story Telling and Mixed Media;
Textiles Art; Wearable Art;
Cultural Weaving; Story Telling and
Mixed Media.

OCTOBER 2022

Mental Health Week; Slow
Down and Stitch; Slow Down
and Stitch; Sound Healing in
the Garden; Drawing Breath +
Slow Looking; Drawing Breath +
Slow Looking for Kids; Drawing
Breath + Slow Looking for Kid;
Connectivity; Morning Yoga
Session; Locomotive Dreams
Exhibition Opening; Creative
Youth Day; Art Antics; Locomotive
Dreams Workshop; Locomotive
Dreams Workshop; COMPASS
Short Course; COMPASS Short
Course; Art Antics; Radius 4.0
EOI's Open; Hobbies+High Tea;
Locomotive Dreams Workshop;
Slump+Hump; Elevate: Instagram
101; Paint+Sip; Art Antics.

Pictured Valeria Scoponi
delivering speeches at the
Radius 4.0 exhibition opening.
Image credit: AB Videography.

NOVEMBER 2022

Art Antics; COMPASS Short Course; COMPASS Short Course; COMPASS Short Course; Art Antics; Mama Stitch
Mama Stitch; Open Borders: The 26th Parallel and Beyond Exhibition Opening; Locomotive Dreams Workshop; Art Antics; Portside Twilight Christmas Festival; Portside Makers Market; Creative Youth Day, Art Antic; Slump+Hum; Paint+Sip; Art Antics.

DECEMBER 2022

Art Antics; The Jury Art Prize 2023 EOI's Open; Colours; Art Antics; Colours Art Antics; Colours.

FEBRUARY 2023

Art Antics; The Jury Art Prize Information Session; COMPASS Short Course; COMPASS Short Course; Art Antics; Radius 4.0 Artist Talk; Radius 4.0 Exhibition Opening; Bobbi Lockyer: 4 Ocean Exhibition Opening; Paint+Sip; Art Antics; Elevate: Networking Event; Start Up Program; Art Antics; Arting Around.

MARCH 2023

COMPASS Short Course; Art Antics; Arting Around; Mono Printing Workshop; Arting Around; The Jury Art Prize Information Session; Art Antics; Hobbies+High Tea: Felt Flowers; Easter Bunnies; Arting Around; Elevate: Masterclass; Art Antics; Ceramics Course: Introductory; Start Up Program; Arting Around; Paint+Sip; Art Antics; Arting Around; Portside Block Party; Art Antics.

APRIL 2023

Create Your Own Toy Game; Portside Easter Egg Hunt; Picasso Face Paint Workshop; Eclipse Family Yoga; Magic Ball Workshop; Floral Wreath Making for Teens; Movie Night: Labyrinth Start Up Program; Art Antics; Arting Around: Seniors Workshop; Sustainable Fashion Market; Hobbies+High Tea; Arting Around: Seniors Workshop; Community Art Day: Connecting Creative Communities; Art Antics; Ceramics Introductory Course; Paint+Sip.

MAY 2023

Art Antics; Hobbies+High Tea: Staircase to the Moon Embroidery; Art Antics; Arting Around: Seniors Workshop; Mothers Day Makers Markets; Arting Around: Seniors Workshop; Portside Movie Night: Top End Wedding; The Jury Art Prize Exhibition Opening; Art Antics; Arting Around: Seniors Workshop; Art Antics; Arting Around: Seniors Workshop; Ceramics Intermediate Course; Portside Music in the Gardens: Virjilla Joyce; Start Up Program; Paint+ Sip; Dirty Earth Project; Art Antics.

JUNE 2023

Ceramics Intermediate Course; Art Antics; Arting Around: Seniors Workshop; Art Antics; Arting Around: Seniors Workshop; Portside Movie Night: Pricilla Queen of the Dessert (Part of Pride Week); Arting Around: Seniors Workshop; Dear Don Exhibition Opening; Art Antics; Arting Around: Seniors Workshop; Portside Music in the Gardens; Jewellery Making for Teens; Ceramics Course; Art Antics.

47ARTWORKS
SOLD**1000+**PROGRAM
DIRECT
ENGAGEMENT**97**TOTAL
ARTISTS
ENGAGED**25/55**LOCAL /
PILBARA
ARTISTS
ENGAGED**93791**CG+S
FACEBOOK
REACH**7**EXHIBITION
SHOWINGS**2**ARTISTS
WITH
DISABILITY
ENGAGED**1**ARTIST IN
RESIDENCE**16154**WEBSITE
VISITS**235053**TJC
FACEBOOK
REACH**50+**DELIVERED
WORKSHOP**700+**WORKSHOP
ATTENDEES

Our Partners

Financial



Exhibition





THE
JUNCTION
CO

Courthouse Gallery+Studio

16 Edgar Street, Port Hedland WA 6721

(08) 9141 0041

hello@thejunctionco.com.au

www.thejunctionco.com.au

fb The Junction Co.
in @thejunctionco_pilbara

fb Courthouse Gallery+Studio
in @courthousegallery_studio

fb Portside, heart of the West End
in @portside_heartofthewestend

in @portside_soap
hello@portsidessoap.com.au
www.portsidessoap.com.au

